

423/627 Victoria Street Abbotsford VIC

1 1

Style, Class and Sophistication

With Victoria Gardens Shopping Centre opposite, Bridge Road/Swan Street eateries and boutiques close by, tram on your doorstep to the CBD in 15/20 minutes, The Park House is the ultimate lifestyle choice.

Features:

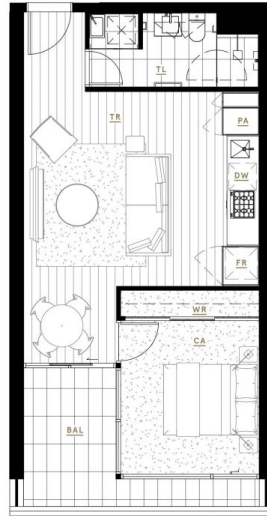
- 1 Bedroom, 1 Bathroom
- Exquisite Location on the Banks of the Yarra River
- Superior Gaggenau Appliances
- Beautiful wide engineered Oak floors
- Sustainable 6+ Star Green Living Inside and Out
- World-Class Resident Amenities
- Only a 15min tram ride to the Paris-end of Collins St
- Victoria Gardens Shopping Centre across the road

View : <https://www.spaceea.com.au/lease/vic/inner-city/abbotsford/residential/apartment/7637165>



Joseph McCurry
03 9257 8788

THE
PARKHOUSE
ABBOTSFORD



KEY

PA	Pantry
FR	Fridge/Freezer
DW	Dishwasher
WR	Wardrobe
LAU	Laundry
BAL	Balcony
TR	Timber Floor
TL	Tile Floor
CA	Carpet



APARTMENT TYPE

A3.1 1 Bed, 1 Bath

AREA

Internal	50.5m ²	542ft ²
External	8.3m ²	90ft ²
Total	58.7m²	632ft²

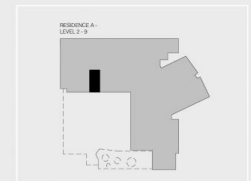
APARTMENTS

A223, A323, A423, A523, A623, A723, A823, A923

RESIDENCE



LEVELS



Disclaimer: All images, design features, views, photographs, diagram's and artist's impressions are for presentation purposes and are indicative only. Dimensions, areas, fittings and specifications are indicative and subject to change without notice. All internal/external furniture including study desks and planter boxes and whitegoods are not included in the price. Purchaser should check the plans and specifications in the terms of the contract of sale carefully prior to signing the contract.