

310/631 Victoria Street Abbotsford VIC

1 1

Beautiful East Facing ParkHouse Apartment

View : <https://www.spaceea.com.au/lease/vic/inner-city/abbotsford/residential/apartment/7636627>

Looking for a luxurious and modern lifestyle in the heart of Abbotsford? Look no further than 310/631 Victoria Street ! This stunning apartment is situated in The Parkhouse, a newly created precinct that offers the ultimate in modern living.

This apartment has everything you need to live comfortably and in style. The location is simply exquisite, nestled on the banks of the Yarra River and only 3km from the CBD. With the Victoria Gardens Shopping Centre just across the road and Bridge Road/Swan Street eateries and boutiques close by, you'll have everything you need right at your doorstep. And with a tram stop right outside, you can be in the CBD in just 15 minutes. Enjoy the best of both worlds - the vibrant city lifestyle and the tranquillity of riverfront living.



Joseph McCurry
03 9257 8788

THE
PARKHOUSE
 ABBOTSFORD



KEY

- PA Pantry
- FB Fridge/Freezer
- DW Dishwasher
- WR Wardrobe
- LAU Laundry
- BAL Balcony
- TR Timber Floor
- TL Tile Floor
- CA Carpet



APARTMENT TYPE

A11 1 Bed, 1 Bath

AREA

Internal	51.0m ²	549.0ft ²
External	5.5m ²	59.2ft ²
Total	56.5m²	608.2ft²

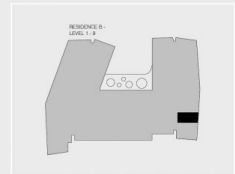
APARTMENTS

B110, B210, B310, B410, B510, B610, B710,
 B810, B910

RESIDENCE



LEVELS



Disclaimer: All images, design features, views, photographs, diagrams and artist's impressions are for presentation purposes and are indicative only. Dimensions, areas, fittings and specifications are indicative and subject to change without notice. All internal/external furniture (including study desks and printer boxes) and subfloors are not included in the price. Purchaser should check the plans and specifications in the terms of the contract of sale carefully prior to signing the contract.