



803/35 Wilson Street South Yarra VIC

2 2 1

APPLY HERE:
https://apply.sortedservices.com/#/properties?id=664ab896-0d00-4d03-acf7-61dab011f313&type=t&agencyCode=AU_SPEA

View : <https://www.spaceea.com.au/lease/vic/inner-city/south-yarra/residential/apartment/7596395>

Situated on the North West corner of the top apartment floor in the building, 803 is one of the larger apartments in the building (104.2m² total area) featuring :

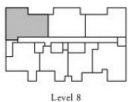
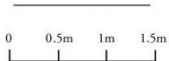
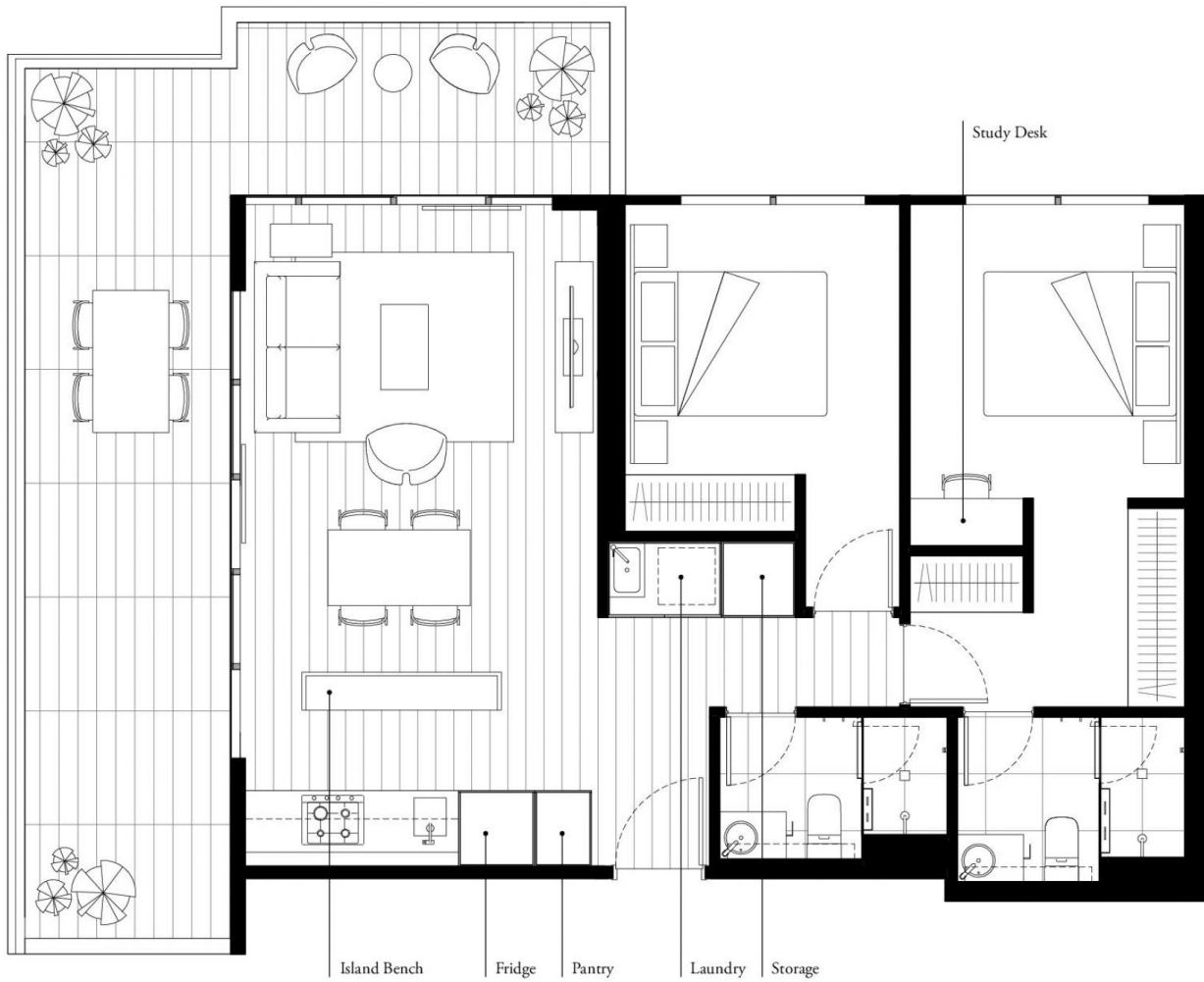
- Two bedrooms - both with natural light and Built In Robes
- Master bedroom with ensuite, two wardrobes, and study desk/dressing table
- Quality kitchen with island bench
- Timber floorboards in the entry, kitchen, meals and living areas
- Concealed air-conditioning
- Secure car space (not stacker) and storage

APARTMENT TYPE 19

8.03

2 Bedroom, 2 Bathroom

Total Area 104.2sqm
Apartment Area 73.6sqm
Terrace Area 30.6sqm



Level 8



ESSENCE

These plans are intended as a guide only. The dimensions and areas are approximate only and may not accurately represent the actual dimensions and areas of the apartments or the spaces within them and are subject to change without notice. In addition, locations of utilities may vary during construction and fittings and fixtures on these plans are for illustrative purposes only. The areas are generally measured in accordance with the Property Council of Australia method of measurement. Prospective purchasers must rely on their own enquiries and should refer to the Contract of Sale and its schedules for all matters to be included in the purchase price of the apartment, including plans, finishes, fixtures, fittings, appliances and other particulars of sale. Loose furniture and planters are not included. Extent of floor finishes may vary. External space and landscaping indicative only. Refer to level plans for further information.