



321/631 Victoria Street Abbotsford VIC

2 2 1

* TWO WEEKS FREE RENT *

* Subject to approval of a 12 month lease * Free rent will be one week off the first, and one week off the last month's rents *

** Net Effective Rent over 12 months = \$721 per week **

This new two bedroom, two bathroom apartment (with car space) is just a short walk to Victoria Gardens Shopping Centre opposite with Bridge Road/Swan Street eateries and boutiques also close by.

Features include:

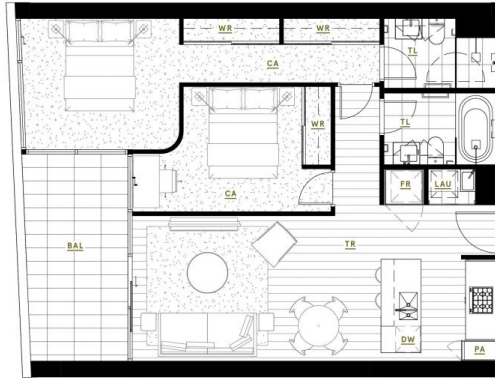
- 2 bedrooms with built in robes and master with ensuite
- Sleek central bathroom large bath
- Superior kitchen with Gaggenau Appliances

View : <https://www.spaceea.com.au/lease/vic/inner-city/abbotsford/residential/apartment/7552497>



Joseph McCurry
03 9257 8788

THE
PARKHOUSE
 ABBOTSFORD



KEY

- PA Pantry
- FB Fridge/Freezer
- DW Dishwasher
- WR Wardrobe
- LAU Laundry
- BAL Balcony
- TR Timber Floor
- TL Tile Floor
- CA Carpet



APARTMENT TYPE

G8 2 Bed, 2 Bath

AREA

Internal	75.5m ²	812.7ft ²
External	11.0m ²	118.4ft ²
Total	86.5m²	931.1ft²

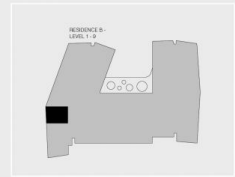
APARTMENTS

B120, B221, B321, B421, B521, B621, B721, B820, B920

RESIDENCE



LEVELS



Disclaimer: All images, design features, views, photographs, diagrams and artist's impressions are for presentation purposes and are indicative only. Dimensions, areas, fittings and specifications are indicative and subject to change without notice. All internal/external furniture (including study desks and printer boxes) and subfloors are not included in the price. Purchaser should check the plans and specifications in the terms of the contract of sale carefully prior to signing the contract.