



430/631 Victoria Street Abbotsford VIC

1 1

Located across the road from Victoria Gardens Shopping Centre, with Bridge Road/Swan Street eateries and boutiques not far away, this apartment features :

- Superior Kitchen with Gaggenau oven, gas stove top, and dishwasher
- Concealed air conditioner
- Balcony with Yarra views
- Bedroom with Built In Robes
- Sleek Bathroom
- Beautiful wide engineered oak floors in living areas (carpet in bedroom)
- Sustainable 6+ Star Green Living Inside and Out
- World-Class Resident Amenities
- Exquisite Location

all only a 15min tram ride to the Paris-end of Collins St.

View : <https://www.spaceea.com.au/lease/vic/inner-city/abbotsford/residential/apartment/7552020>



Joseph McCurry
03 9257 8788

THE
PARKHOUSE
 ABBOTSFORD



KEY

- PA Pantry
- FR Fridge/Freezer
- DW Dishwasher
- WR Wardrobe
- LAU Laundry
- BAL Balcony
- TR Timber Floor
- TL Tile Floor
- CA Carpet



APARTMENT TYPE

A16 1 Bed, 1 Bath

AREA

Internal	53.1m ²	571.6ft ²
External	5.4m ²	58.1ft ²
Total	58.5m²	629.7ft²

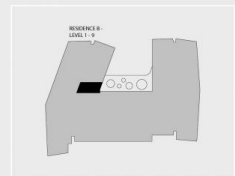
APARTMENTS

B129, B230, B330, B430, B530, B630, B730,
 B829, B929

RESIDENCE



LEVELS



Disclaimer: All images, design features, views, photographs, diagrams and artist's impressions are for presentation purposes and are indicative only. Dimensions, areas, fittings and specifications are indicative and subject to change without notice. All internal/external furniture (including study desks and printer boxes) and subgoods are not included in the price. Purchaser should check the plans and specifications in the terms of the contract of sale carefully prior to signing the contract.