

234/631 Victoria Street Abbotsford VIC

1 1 1

Location, Lifestyle And River Views! - White Goods Included

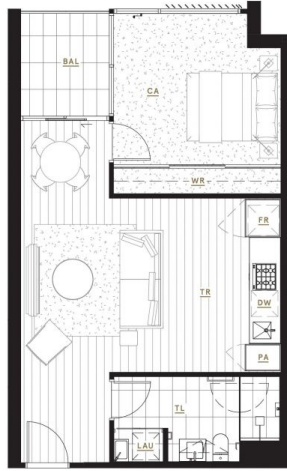
View : <https://www.spaceea.com.au/lease/vic/inner-city/abbotsford/residential/apartment/7484971>

This 1 bedroom, brand new apartment with river views is just a short walk to Victoria Gardens Shopping Centre opposite with Bridge Road/Swan Street eateries and boutiques also close by.

Features include:

- 1 bedroom with built in robes
- Sleek central bathroom large shower
- Gorgeous views of surrounding bushland
- Superior kitchen with Gaggenau Appliances
- Beautiful wide engineered Oak floors
- Sustainable 6+ Star Green Living Inside and Out
- Secure parking space for 1 vehicle
- World-Class Resident Amenities

THE
PARKHOUSE
 ABBOTSFORD



KEY

- PA Pantry
- FR Fridge/Freezer
- DW Dishwasher
- WR Wardrobe
- LAU Laundry
- BAL Balcony
- TR Timber Floor
- TL Tile Floor
- CA Carpet



APARTMENT TYPE

A18 1 Bed, 1 Bath

AREA

Internal	57.8m ²	622.1ft ²
External	5.0m ²	53.8ft ²
Total	62.8m²	675.9ft²

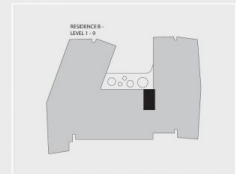
APARTMENTS

B133, B234, B334, B434, B534, B634, B734, B833, B933

RESIDENCE



LEVELS



Disclaimer: All images, design features, views, photographs, diagrams and artist's impressions are for presentational purposes and are indicative only. Dimensions, areas, fittings and specifications are indicative and subject to change without notice. All internal/external furniture (including study desks and garden beds) and fittings are not included in the price. Purchaser should check the plans and specifications in the terms of the contract of sale carefully prior to signing the contract.