






413/10 Burnley Street Richmond VIC

2  2  1 

APPLY HERE:
https://apply.sortedservices.com/#/properties?id=1ff20e96-56ba-4208-a980-44745213b329&type=t&agencyCode=AU_SPEA

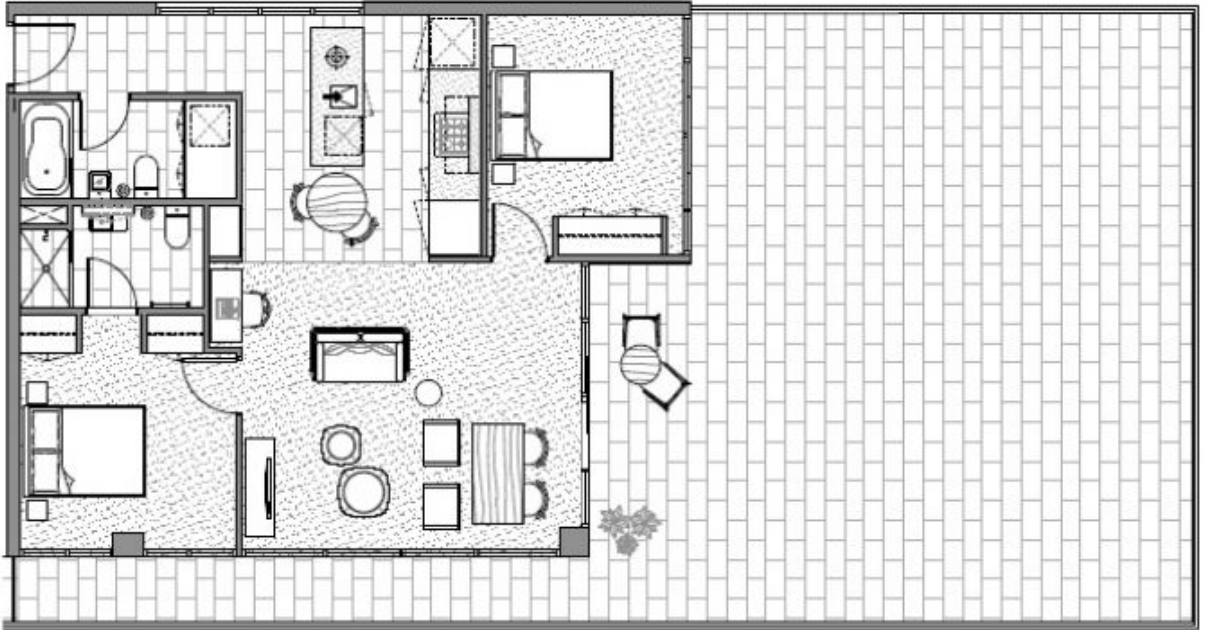
View : <https://www.spaceea.com.au/lease/vic/inner-city/richmond/residential/apartment/7472578>

A rare and exciting opportunity to secure this stunning apartment with a terrace even bigger (112m²) than the already large (84m²) apartment.

Bathed in natural sunlight with North and West views, features include:

- 2 bedrooms with robes
- 2 bathrooms
- Gourmet kitchen with stainless Euro appliances including dishwasher & large Island bench
- Spacious corner living area

APARTMENT TYPE 27
2 Bedroom & 2 Bathroom
—
INTERNAL AREA 81sq.m
TERRACE AREA 88sq.m
TOTAL AREA 169sq.m
—
SCALE
1:60
—
ARCHITECT
SJB Architects
HP&G Interiors
—
PROJECT BY
Satta Properties
—
TYPE 27
A413



KEY PLAN
Level 4

