






Level 4/B425/631 Victoria Street Street Abbotsford VIC

2  2  1 

B425/631 Victoria Street, Abbotsford is a stylish and contemporary apartment located in the heart of the bustling suburb of Abbotsford. This property boasts two generously-sized bedrooms, two modern bathrooms, and a spacious open-plan living and dining area, making it an ideal choice for couples, small families, or professionals seeking a comfortable and convenient living space.

Type : Apartment

View : <https://www.spaceea.com.au/lease/vic/inner-city/abbotsford/residential/apartment/7464201>

As you enter the apartment, you are greeted with an abundance of natural light and sleek finishes throughout. The kitchen features premium Gaggenau appliances, stone benchtops, and ample storage space, making it a pleasure to cook and entertain in. The living and dining area is spacious and inviting and leads seamlessly onto a large private balcony.

[For full version visit the website](https://www.spaceea.com.au)

THE
PARKHOUSE
 ABBOTSFORD



KEY

- PA Pantry
- FB Fridge/Freezer
- DW Dishwasher
- WR Wardrobe
- LAU Laundry
- BAL Balcony
- TR Timber Floor
- TL Tile Floor
- CA Carpet



APARTMENT TYPE

G9 2 Bed, 2 Bath

AREA

Internal	75.5m ²	812.7ft ²
External	11.0m ²	118.4ft ²
Total	86.5m²	931.1ft²

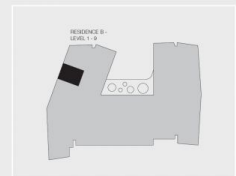
APARTMENTS

B124, B225, B325, B425, B525, B625, B725, B824, B924

RESIDENCE



LEVELS



Disclaimer: All images, design features, views, photographs, diagrams and artist's impressions are for presentation purposes and are indicative only. Dimensions, areas, fittings and specifications are indicative and subject to change without notice. All internal/external furniture (including study desks and garden hoses) and fittings are not included in the price. Purchaser should check the plans and specifications in the terms of the contract of sale carefully prior to signing the contract.