



304/627 Victoria Street Abbotsford VIC

2  2  1 

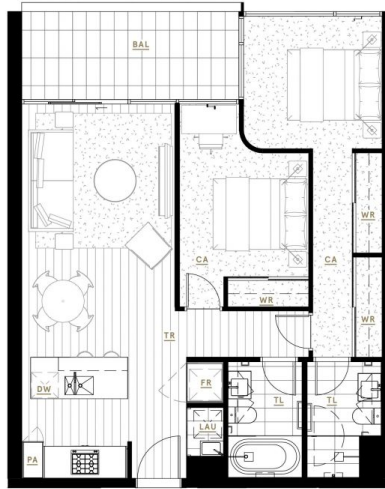
With Victoria Gardens Shopping Centre opposite, Bridge Road/Swan Street eateries and boutiques close by, tram on your doorstep to the CBD in 15/20 minutes, The Park House is the ultimate lifestyle choice.

View : <https://www.spaceea.com.au/lease/vic/inner-city/abbotsford/residential/apartment/7407267>

Features:

- 2 Bedroom, 2 Bathroom, 1 Car Space (not stacker / w storage cage)
- Exquisite Location on the Banks of the Yarra River
- Superior Gaggenau Appliances
- Beautiful wide engineered Oak floors
- Sustainable 6+ Star Green Living Inside and Out
- World-Class Resident Amenities
- Only a 15min tram ride to the Paris-end of Collins St
- Victoria Gardens Shopping Centre across the road

THE
PARKHOUSE
ABBOTSFORD



KEY

- PA Pantry
- FR Fridge/Freezer
- DW Dishwasher
- WR Wardrobe
- LAU Laundry
- BAL Balcony
- TR Timber Floor
- TL Tile Floor
- CA Carpet



APARTMENT TYPE

G12 2 Bed, 2 Bath

AREA

Internal	74.5m ²	801ft ²
External	9.0m ²	97ft ²
Total	83.5m²	898ft²

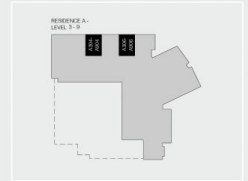
APARTMENTS

A304, A306, A404, A406, A504, A506, A604, A606, A704, A706, A804, A806, A904, A906

RESIDENCE



LEVELS



Disclaimer: All images, design features, views, photographs, diagrams and artist's impressions are for presentation purposes and are indicative only. Dimensions, areas, fittings and specifications are indicative and subject to change without notice. All internal/external furniture including study desks and planter boxes and whitegoods are not included in the price. Purchaser should check the plans and specifications in the terms of the contract of sale carefully prior to signing the contract.