



408/8 Burnley Street Richmond VIC

1 1 1

North East Corner Apartment

Features Include:

- Good size bedroom with built-in-robos
- Considered open plan living
- Large undercover terrace
- Designer kitchen with island bench
- Stylish bathroom
- Secure & convenient
- Underground car space (not stacker) with storage cage

Walk to Bridge Road shops, The CBD, The MCG, plus all transport at your doorstep. Seconds to The Yarra River bike trails and parklands.

Book to inspect, enquire online, or email joseph.mccurry@spaceea.com.au for more information.

View : <https://www.spaceea.com.au/lease/vic/inner-city/richmond/residential/apartment/7382022>



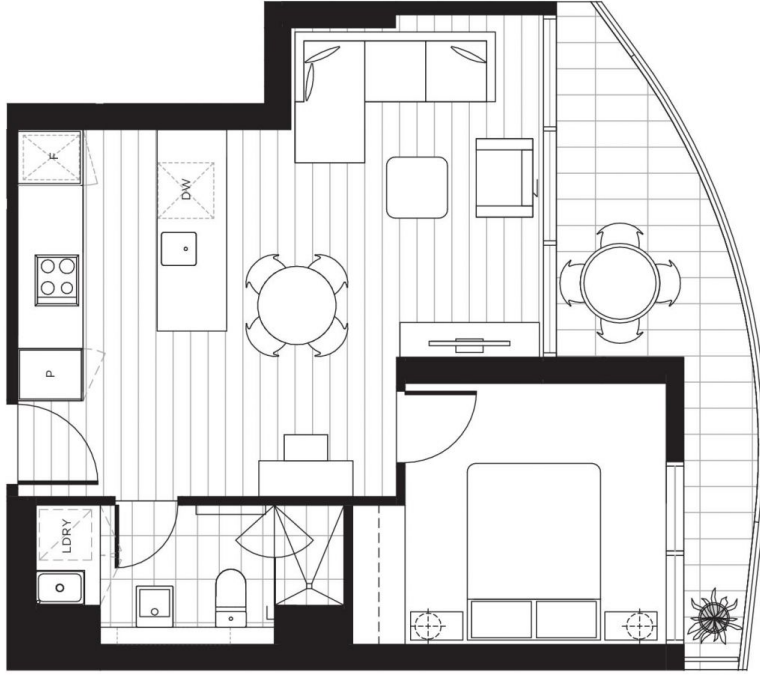
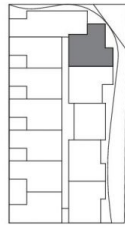
Joseph McCurry
03 9257 8788



Apartment Type I
2.08, 4.08

- 1 Bedroom
- 1 Bathroom

Total Area 58.1sqm
Apartment Area 48.1sqm
Terrace Area 10.0sqm



Please note that this floor plan is indicative only and not to scale. Changes may be made during development, and dimensions, setout, finishes and specifications are subject to change in accordance with provisions of the Contract of Sale. The furniture depicted is not included with any sale and should not be taken to indicate the final position of power points, TV connection points and the like. Bulkheads necessary for services and structure are not depicted.

