

**422/627 Victoria Street Abbotsford VIC**

1 1

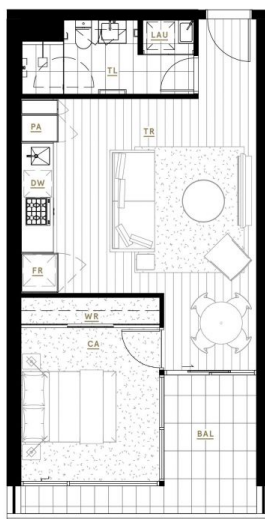
Apartment features include :

- functional quality kitchen with Gaggenau gas cooktop, electric oven, and dishwasher
- concealed air conditioner
- large bedroom with built in robes
- practical balcony
- superior amenities.

**View** : <https://www.spaceea.com.au/lease/vic/inner-city/abbotsford/residential/apartment/7365375>

Book to inspect, or enquire online, or email [Annabel.Kotz@SpaceEA.com.au](mailto:Annabel.Kotz@SpaceEA.com.au) for more information.

THE  
PARKHOUSE  
ABBOTSFORD



KEY

- PA Pantry
- FB Fridge/Freezer
- DW Dishwasher
- WR Wardrobe
- LAU Laundry
- BAL Balcony
- TR Timber Floor
- TL Tile Floor
- CA Carpet



APARTMENT TYPE

**A5.1** 1 Bed, 1 Bath

AREA

Internal	50.4m <sup>2</sup>	547ft <sup>2</sup>
External	8.4m <sup>2</sup>	90ft <sup>2</sup>
<b>Total</b>	<b>58.8m<sup>2</sup></b>	<b>632ft<sup>2</sup></b>

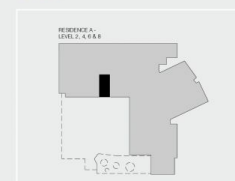
APARTMENTS

A222, A422, A622, A822

RESIDENCE



LEVELS



Disclaimer: All images, design features, views, photographs, diagrams and artist's impressions are for presentation purposes and are indicative only. Dimensions, areas, fittings and specifications are indicative and subject to change without notice. All internal/external furniture including study desks and planter boxes and whitegoods are not included in the price. Purchaser should check the plans and specifications in the terms of the contract of sale carefully prior to signing the contract.