



9/322 Albert Street East Melbourne VIC

3 **2** **1**

Leafy Fitzroy Gardens Views

Overlooking the magnificent heritage listed Fitzroy Gardens and a stroll to Spring Street and the Paris end of the CBD, theatres, restaurants and Queen Victoria Markets is this unique "townhouse style" apartment.

Set over two levels, its clever design incorporates a living and dining area that spans the full double width of the apartment, taking advantage of the famous park views from where one can watch the seasons change.

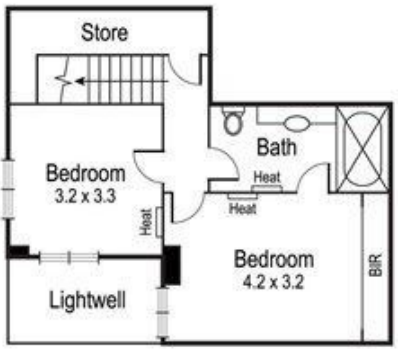
A generous kitchen forms a backdrop with granite bench tops and two breakfast bars, a plethora of cabinetry, gas stove and dishwasher.

On the same level, set back and quietly placed, the main

Building Size : 140 sqm
View : <https://www.spaceea.com.au/lease/vic/inner-city/east-melbourne/residential/apartment/7203041>



Joseph McCurry
03 9257 8788



Ground Floor



First Floor

Particulars herein, including floorplans, measurements and textures, are approximate and for illustrative purposes only. This information does not constitute any representation by the owner or agent and prospective buyers should view the property in person.