

**A815/609 Victoria Street Abbotsford VIC**

1 1 1

Moments to Victoria Gardens shopping precinct, Yarra River bike trails, parklands, all transport and the CBD just a 10 minute tram ride away, this apartment's features include :

- large bedroom with built-in-wardrobes
- bright open plan living & dining
- oversized under cover entertainers terrace
- stylish central bathroom
- concealed laundry
- secure basement car space
- storage

plus unparalleled facilities - library, pool, gym, common BBQ area

Total size 62m2

**View** : <https://www.spaceea.com.au/lease/vic/inner-city/abbotsford/residential/apartment/7058508>



**Joseph McCurry**  
03 9257 8788

**Apartment Type S4**  
1 Bedroom & 1 Bathroom

**Areas**

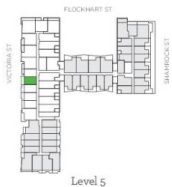
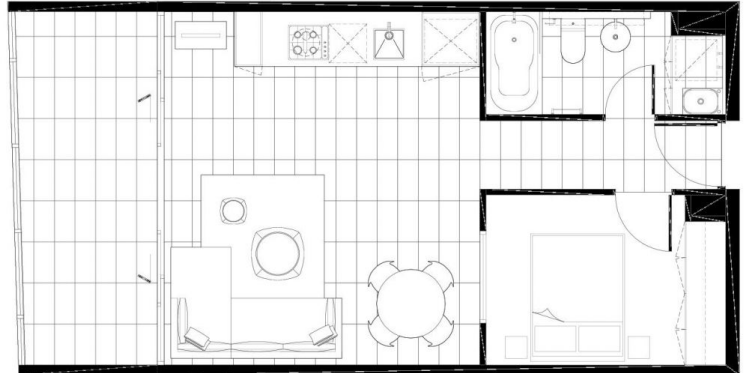
Apartment	46.0m <sup>2</sup>
Balcony	12.7m <sup>2</sup>
Total	58.7m <sup>2</sup>

**Architect**  
SJB Architects &  
SJB Interiors

**Developer**  
Salta Properties

**Scale**  
1:50

**Apartments**  
A515  
A615  
A715  
A815



Please note that this floor plan was produced prior to completion of construction and is indicative only and not to scale. Changes may be made during development and dimensions, tile setout, finishes and specifications are subject to change without notice in accordance with the provision of the Contract of Sale. The furniture depicted is not included with any sale and should not be taken to indicate the final position of power points, TV connection points and the like. Prospective purchasers must rely on their own enquiries. Bulkheads necessary for services and structure are not depicted.

