



### 413/10 Burnley Street Richmond VIC

2 2 1

A rare and exciting opportunity to secure this stunning apartment with a terrace even bigger (88m<sup>2</sup>) than the already large (81m<sup>2</sup>) apartment.

**View :** <https://www.spaceea.com.au/lease/vic/inner-city/richmond/residential/apartment/6981525>

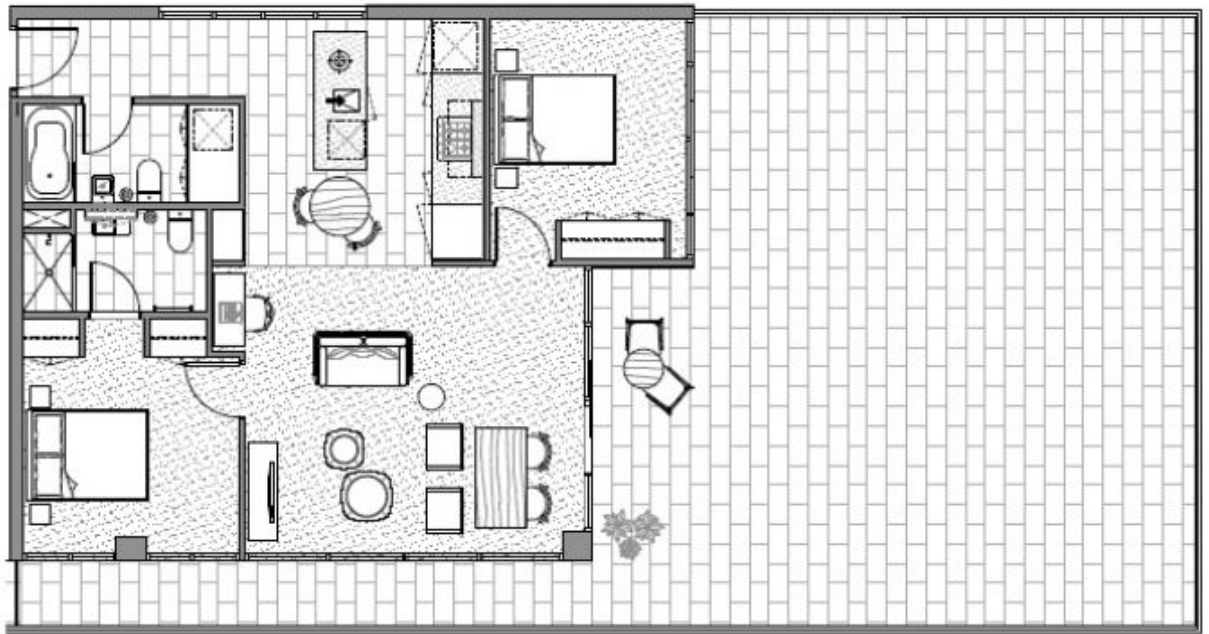
Bathed in natural sunlight with North and West views, features include:

- 2 bedrooms with robes
- 2 bathrooms
- Gourmet kitchen with stainless Euro appliances including dishwasher & large Island bench
- Spacious corner living area
- Enormous entertaining terrace with views over the Richmond rooftops to Melbourne's CBD
- Access to heated pool, sauna & gym
- Secure basement parking with storage cage



**Joseph McCurry**  
03 9257 8788

APARTMENT TYPE 27  
 2 Bedroom & 2 Bathroom  
 —  
 INTERNAL AREA 81sq.m  
 TERRACE AREA 88sq.m  
 TOTAL AREA 169sq.m  
 —  
 SCALE  
 1:60  
 —  
 ARCHITECT  
 SJB Architects  
 HP&G Interiors  
 —  
 PROJECT BY  
 Salta Properties  
 —  
 TYPE 27  
 A413



KEY PLAN  
 Level 4

