

**225/627 Victoria Street Abbotsford VIC**

2 1 1

**CHECK OUT THE ONLINE APARTMENT TOUR**

Special features of this apartment include:

- floorboards in living areas, carpet in bedrooms
- Gaggenau gas cooktop, electric oven and dishwasher.

Located on the banks of the Yarra, serene riverfront meets dynamic inner city living at The Park House - moments from Richmond, Victoria Gardens, Kew parklands and the heart of Melbourne.

Landscaped pedestrian access will link Victoria Street and the Capital City Trail. A strong focus on re-vegetation and biodiversity has been key in selecting native and indigenous trees and plants to encourage natural birdlife and wildlife to inhabit the area.

**View** : <https://www.spaceea.com.au/lease/vic/inner-city/abbotsford/residential/apartment/6891548>



**Joseph McCurry**  
**03 9257 8788**

THE  
**PARKHOUSE**  
 ABBOTSFORD



KEY

- PA Pantry
- FR Fridge/Freeter
- DW Dishwasher
- WR Wardrobe
- LAU Laundry
- BAL Balcony
- TR Timber Floor
- TL Tile Floor
- CA Carpet



APARTMENT TYPE

**R** 2 Bed, 1 Bath

AREA

Internal	66.3m <sup>2</sup>	713ft <sup>2</sup>
External	10.8m <sup>2</sup>	116ft <sup>2</sup>
<b>Total</b>	<b>77.1m<sup>2</sup></b>	<b>829ft<sup>2</sup></b>

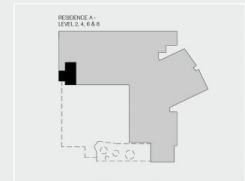
APARTMENTS

A225, A425, A625, A825

RESIDENCE



LEVELS



Disclaimer: All images, design features, views, photographs, diagrams and artist's impressions are for presentation purposes and are indicative only. Dimensions, areas, fittings and specifications are indicative and subject to change without notice. All internal/external furniture including study desks and planter boxes and whitegoods are not included in the price. Purchasers should check the plans and specifications in the terms of the contract of sale carefully prior to signing the contract.