

412/627 Victoria Street Abbotsford VIC

2 1 1

With Victoria Gardens Shopping Centre opposite, Bridge Road/Swan Street eateries and boutiques close by, tram on your doorstep to the CBD in 15/20 minutes, The Park House is the ultimate lifestyle choice.

View : <https://www.spaceea.com.au/lease/vic/inner-city/abbotsford/residential/apartment/6883037>

Features:

- 2 Bedroom, 1 Bathroom, 1 Car Spaces
- Exquisite Location on the Banks of the Yarra River
- Superior Gaggenau Appliances
- Beautiful wide engineered Oak floors
- Sustainable 6+ Star Green Living Inside and Out
- World-Class Resident Amenities
- Only a 15min tram ride to the Paris-end of Collins St
- Victoria Gardens Shopping Centre across the road



Luke Connell
0421 679 021

Enquire online, email luke.connell@spaceea.com.au or call

THE
PARKHOUSE
 ABBOTSFORD



KEY

- PA Pantry
- FR Fridge/Freezer
- DW Dishwasher
- WR Wardrobe
- LAU Laundry
- BAL Balcony
- TR Timber Floor
- TL Tile Floor
- CA Carpet



APARTMENT TYPE

O 2 Bed, 1 Bath

AREA

Internal	70.2m ²	755ft ²
External	12.4m ²	133ft ²
Total	82.6m²	888ft²

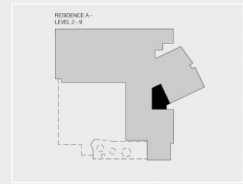
APARTMENTS

A212, A312, A412, A512, A612, A712, A812, A912

RESIDENCE



LEVELS



Disclaimer: All images, design features, views, photographs, diagrams and artist's impressions are for presentation purposes and are indicative only. Dimensions, areas, fittings and specifications are indicative and subject to change without notice. All internal/external furniture including study desks and planter boxes and accessories are not included in the price. Purchasers should check the plans and specifications in the terms of the contract of sale carefully prior to signing the contract.