

**112/35 Wilson Street South Yarra VIC**

1 1

\*\*\*PLEASE NOTE: Due to current lock-down & government guidelines, entry to advertised open for inspections is limited. You must register to attend or contact the agent listed to arrange a private viewing. Thank you\*\*\*

This apartment's features include :

- Large internal area including entrance
- 6.6m2 terrace / outdoor room
- Quality marble framed kitchen
- Concealed air-conditioning
- Timber floorboards in the living areas
- Built In Robes
- Study nook with shutters to lounge

Building features include :

- Impressive entrance
- Communal rooftop garden and BBQ with city views

**View** : <https://www.spaceea.com.au/lease/vic/inner-city/south-yarra/residential/apartment/5827782>



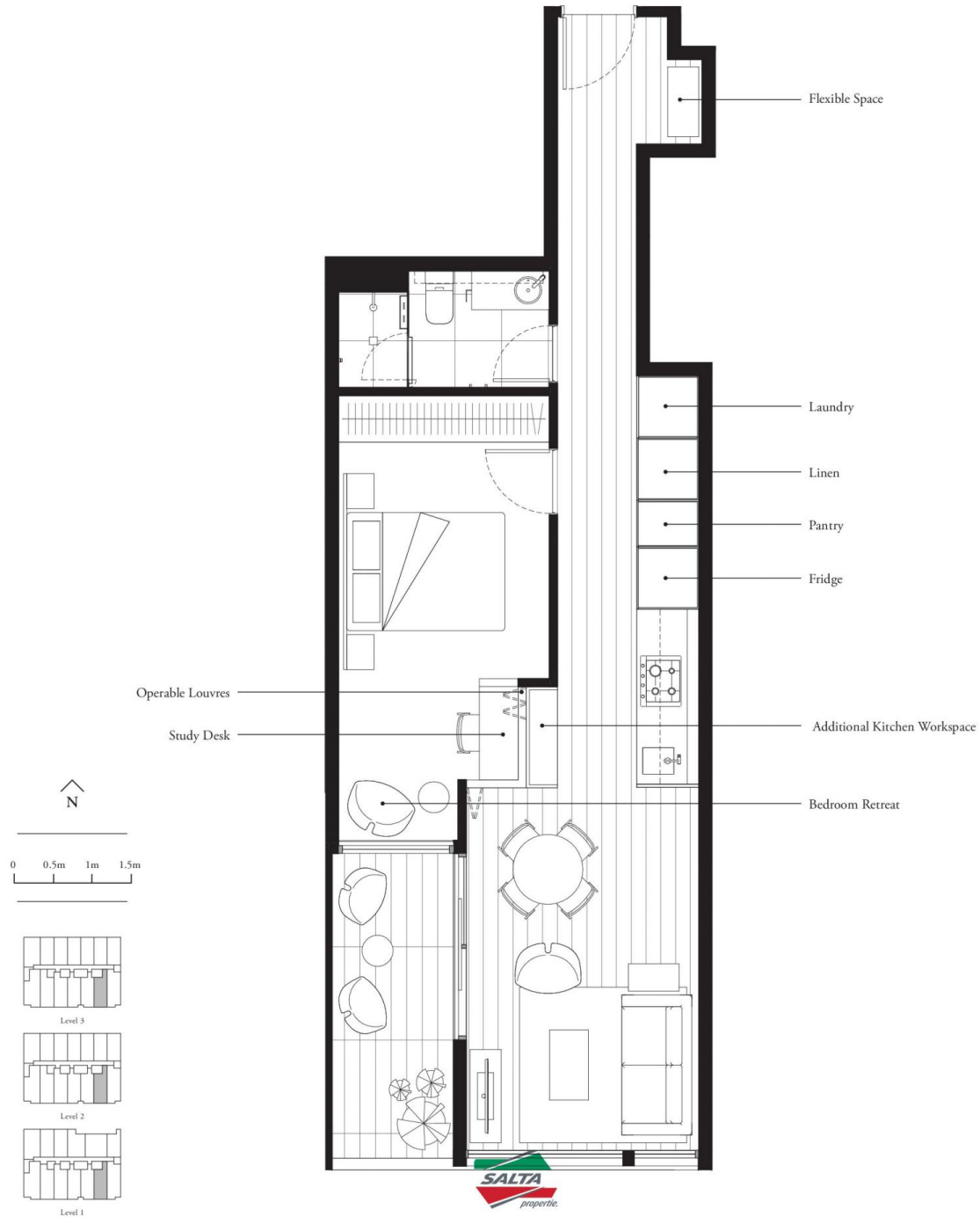
**Joseph McCurry**  
**03 9257 8788**

# APARTMENT TYPE 2B

1.12, 2.13, 3.13

1 Bedroom, 1 Bathroom

Total Area 61.4sqm  
Apartment Area 54.8sqm  
Terrace Area 6.6sqm



These plans are intended as a guide only. The dimensions and areas are approximate only and may not accurately represent the actual dimensions and areas of the apartments or the spaces within them and are subject to change without notice. In addition, locations of utilities may vary during construction and fittings and fixtures on these plans are for illustrative purposes only. The areas are generally measured in accordance with the Property Council of Australia method of measurement. Prospective purchasers must rely on their own enquiries and should refer to the Contract of Sale and its schedules for all matters to be included in the purchase price of the apartment, including plans, finishes, fixtures, fittings, appliances and other particulars of sale. Loose furniture and planters are not included. Extent of floor finishes may vary. External space and landscaping indicative only. Refer to level plans for further information.

ESSENCE