




**G02/35-39 Earl Street Kew VIC**

2  2  2 

Please contact the agent to book a private viewing of this property and we will respond with our availability. Please note; Only one person per group can attend the private inspection

**View** : <https://www.spaceea.com.au/lease/vic/east/kew/residential/apartment/5827735>

A terrific opportunity to secure this modern and very spacious 2 bedroom apartment in a 'Boutique' complex.

Features include:

- Formal entrance
- Spacious lounge/dinning area with polished timber floors
- 'Gourmet' kitchen features a large Island bench with stone tops, an abundance of cupboard space and stainless Euro appliances.
- Two spacious bedrooms with robes and master with luxurious ensuite bathroom.
- Two separate courtyards



**Luke Connell**  
0421 679 021

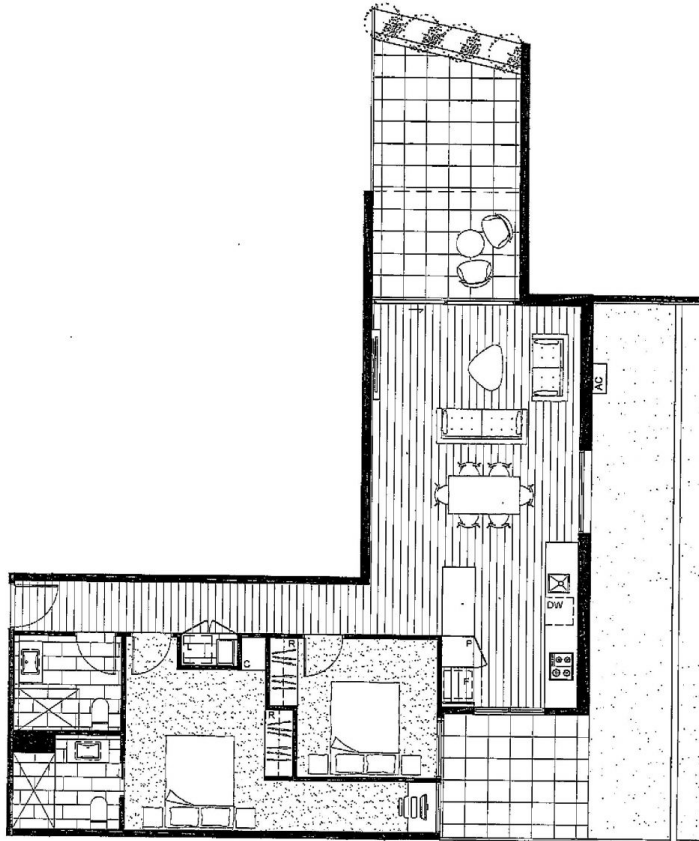
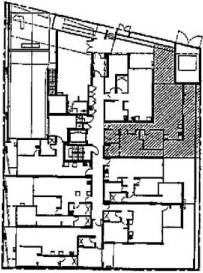
35-49 Earl Street  
Kew

2 Bed, 2 Bath  
Apartment G.02

Approximate Area

Internal Area	91.0m <sup>2</sup>
External Area	56.0m <sup>2</sup>
Total	147.0m <sup>2</sup>

Key Plan



CARABOTT  
HOLT  
TURCINOV



Disclaimer: This information is set out as a general outline for the guidance of intending purchasers and do not constitute an offer or contract. All measurements, dimensions, references to conditions and statutory provisions for use and other details are given in good faith and are believed to be correct, but any intending purchasers should not rely on them as a basis for any representation of fact, but must satisfy themselves by inspection or otherwise to the satisfaction of their own, and where necessary seek advice. No third party supplier or their agent has any authority to make or give any representations as to the accuracy of this information. Areas are calculated based on the Property Council of Australia Method of Measurement for Residential Property.



Date: Dec 12 Revision: F

