

101/10 Burnley Street Richmond VIC

1 1 1

Live right in the heart of Richmond in this modern & bright one bedroom apartment. Located directly opposite Victoria Gardens this building offers its residents the use of the onsite pool, sauna & gym. Victoria Street is walking distance along with its trams, restaurants, shopping, and the Yarra River is only one block away.

View : <https://www.spaceea.com.au/lease/vic/inner-city/richmond/residential/apartment/5827724>

Apartment features include :

- Bedroom with Built In Robes
- Carpeted East facing Living Room
- Tiled Kitchen with gas cook top, Miele appliances, dishwasher & stone bench
- Split system heating & cooling
- Secure entry & video intercom
- Underground basement car park & storage cage



Joseph McCurry
03 9257 8788

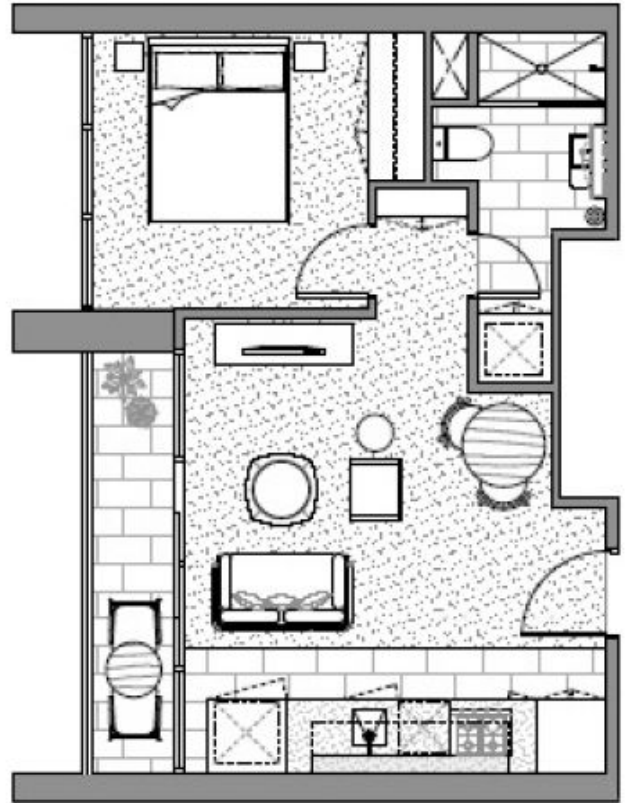
INTERNAL AREA 42sq.m
TERRACE AREA 4sq.m
TOTAL AREA 46sq.m

SCALE
1:60

ARCHITECT
SJB Architects
HP&G Interiors

PROJECT BY
Salla Properties

TYPE 4
A101
A201
A301
A401



KEY PLAN
Level 1

