



9/322 Albert Street East Melbourne VIC

3  **2**  **1** 

Fitzroy Gardens Facing Vista

Natural light fills this three bedroom SE corner split level apartment with Fitzroy Garden views.

View : <https://www.spaceea.com.au/lease/vic/inner-city/east-melbourne/residential/apartment/5827720>

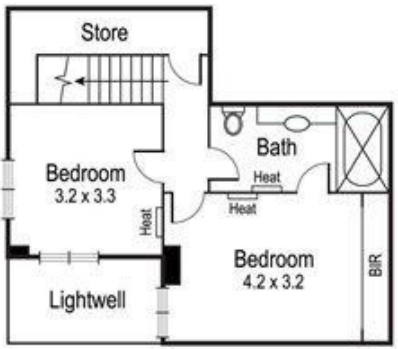
Features include:

- Living / Dining that spans the width of the apartment
- Generous kitchen with granite bench tops, and breakfast bars to the dining AND living
- Master bedroom with ensuite & walk in robe
- Large second and third bedrooms on lower level
- Hardwood floors
- Heating throughout
- Undercover remote access parking.

Close to everything.



Joseph McCurry
03 9257 8788



Ground Floor



First Floor

Particulars herein, including floorplans, measurements and textures, are approximate and for illustrative purposes only. This information does not constitute any representation by the owner or agent and prospective buyers should view the property in person.