

711/35 Wilson Street South Yarra VIC

2 1 1

Features Include:

- Two bedrooms - both with Built In Robes
- Quality kitchen
- Timber floorboards in the entry, kitchen, meals and living areas
- Concealed air-conditioning
- Secure car space (not stacker) and storage
- Impressive entrance
- Communal rooftop garden and BBQ with city views

This boutique apartment building is in the heart of South Yarra's shopping and entertainment precinct, 200 metres off Chapel Street between Toorak and Commercial / Malvern Road cafes, restaurants and stores, 400m to Hawksburn train station, and 1.2km to Domain Road and Faulkner Park.

View : <https://www.spaceea.com.au/lease/vic/inner-city/south-yarra/residential/apartment/5827711>



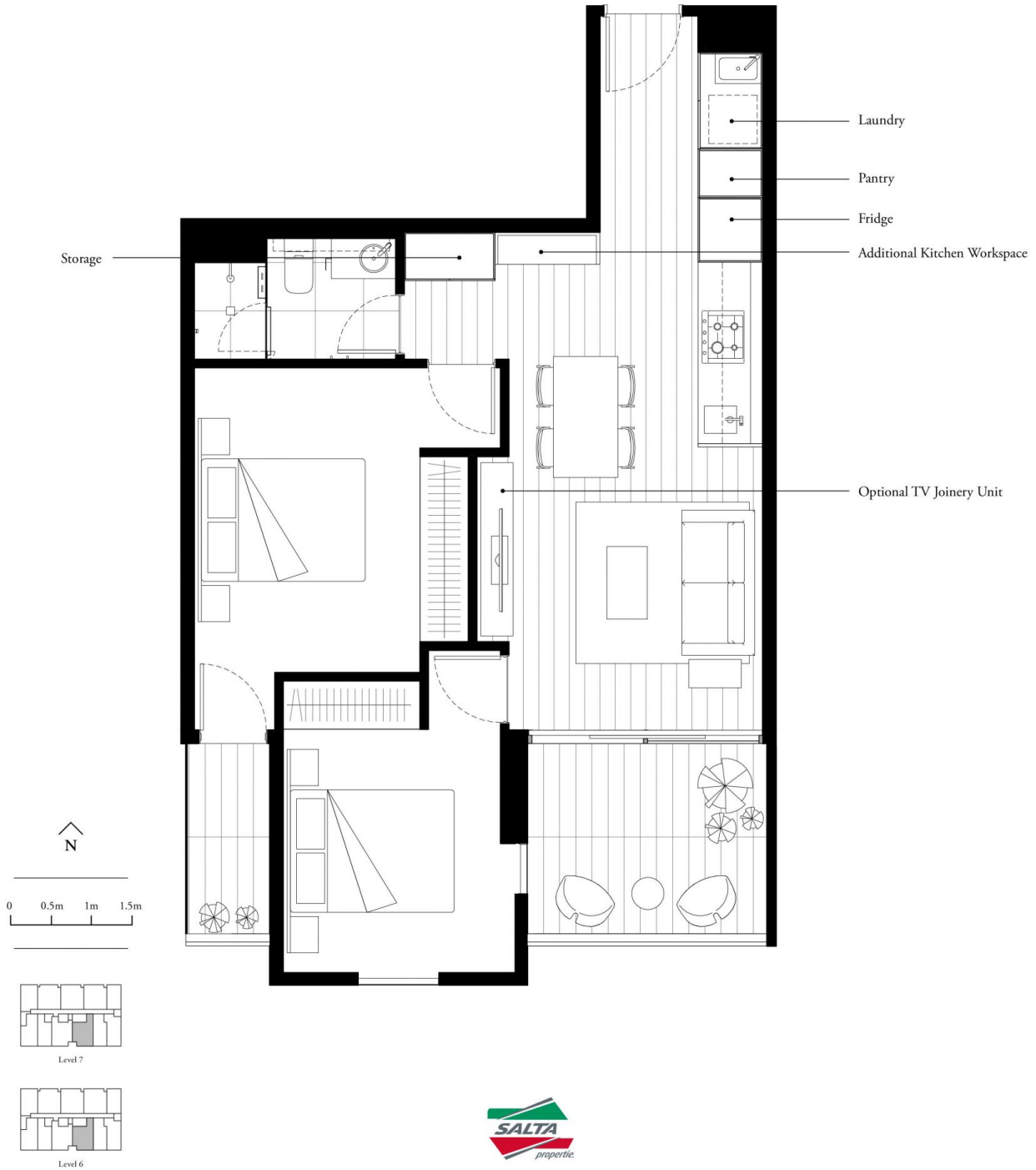
Joseph McCurry
03 9257 8788

APARTMENT TYPE 16B

6.11, 7.11

2 Bedroom, 1 Bathroom

Total Area 72.3sqm
 Apartment Area 62.1sqm
 Terrace Area 10.2sqm



ESSENCE



These plans are intended as a guide only. The dimensions and areas are approximate only and may not accurately represent the actual dimensions and areas of the apartments or the spaces within them and are subject to change without notice. In addition, locations of utilities may vary during construction and fittings and fixtures on these plans are for illustrative purposes only. The areas are generally measured in accordance with the Property Council of Australia method of measurement. Prospective purchasers must rely on their own enquiries and should refer to the Contract of Sale and its schedules for all matters to be included in the purchase price of the apartment, including plans, finishes, fixtures, fittings, appliances and other particulars of sale. Loose furniture and planters are not included. Extent of floor finishes may vary. External space and landscaping indicative only. Refer to level plans for further information.