



501/120 Palmer Street Richmond VIC

2 2 1

Fully Furnished Sub Penthouse

5-6 month lease available.

This two bedroom, two bathroom (central bathroom with bath) apartment situated in a boutique building with stunning views comes with secure pole position car park.

Location offers great dining and bar choices. Close to Victoria Gardens Shopping Centre, a 15 minute tram ride to the city, bike tracks to the city and beyond, close to walking tracks by the Yarra River and has a licensed cafe on the ground floor.

The second bedroom has a built in foldaway bed / desk.

Other features include secure building with intercom

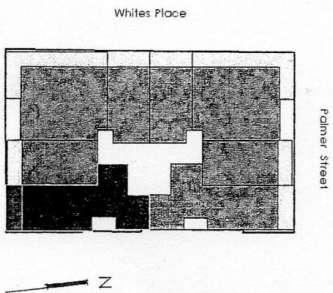
View : <https://www.spaceea.com.au/lease/vic/inner-city/richmond/residential/apartment/5827705>



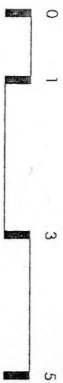
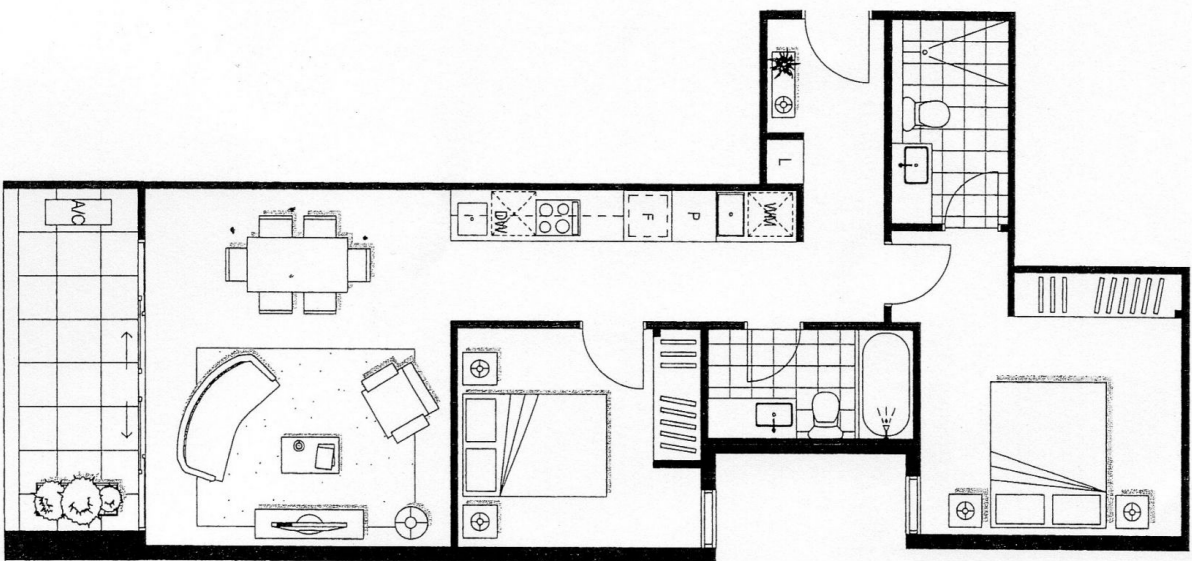
Joseph McCurry
03 9257 8788

Apartment

501



Level:	5
No. of Bedrooms:	2
No. of Bathrooms:	2
Floor Area:	75.9m ²
Open Space:	8.5m ²
Total Area:	84.4m ²



Dimensions and areas are approximate and are subject to change without notice. Internal measurements are taken from centreline of corridor and party walls and the external face of the outside wall. Prospective purchasers must rely on their own enquiries and should refer to the plans, terms and conditions contained in the contract of sale. Loose furniture, white goods and planters are not included.

F = FRIDGE SPACE P = PANTRY WM = WASHING MACHINE SPACE L = LINEN DW = DISHWASHER SPACE A/C = AIR CONDENSOR S = STUDY