

**Level 5/503/8 Burnley Street Richmond VIC**

1 1 1

Near new one bedroom apartment - features include:

- light open-plan living / dining space
- city views over Williams Reserve
- enclosed outdoor room
- Smeg-equipped designer kitchen (gas cook top, electric oven and integrated dishwasher)
- bathroom with floor to ceiling tiling
- car space and storage cage
- ground level café as well as Space's new office
- health and well-being facilities including gym and pool

**View** : <https://www.spaceea.com.au/lease/vic/inner-city/richmond/residential/apartment/5827688>



**Joseph McCurry**  
**03 9257 8788**

Moments from Yarra River trails, cycling tracks and city transportation.  
Directly opposite Ikea and Victoria Gardens Shopping Centre.



**Apartment Type B**

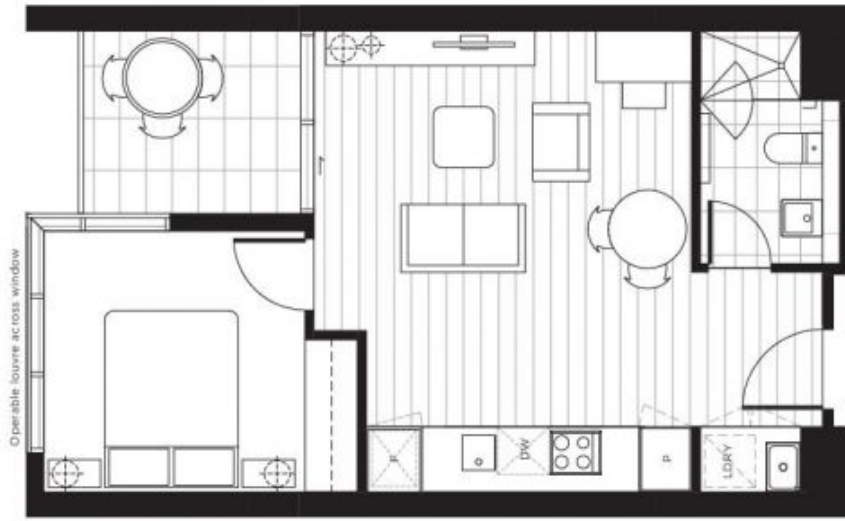
1.02, 1.03, 1.04, 1.05, 1.06,  
3.02\*, 3.03, 3.04, 3.05, 3.06\*  
5.02, 5.03, 5.04, 5.05, 5.06\*

1 Bedroom  
1 Bathroom

Total Area 52.7sqm  
Apartment Area 45.6sqm  
Terrace Area 5.7/7.3\*sqm  
\*Denotes larger balcony



0 2.5m



Please note that this floor plan is indicative only and not to scale. Changes may be made during development, and dimensions, setout, finishes and specifications are subject to change in accordance with provisions of the Contract of Sale. The furniture depicted is not included with any sale and should not be taken to indicate the final position of power points, TV connection points and the like. Bulkheads necessary for services and structure are not depicted.

