

308/35 Wilson Street South Yarra VIC

1 1

All Essence apartments maximize natural light with expansive windows, and inset balconies making an additional outdoor room rather than a windswept space. All residences boast stylish features.

The interior design puts the kitchen at the heart of the home with Smeg appliances including integrated dishwasher and stone-top benches to cater to the urban entertainer. Additional premium fittings and finishes include a concealed air-conditioning system; light fittings; timber floorboards in the entry, kitchen, meals and living areas; stone / mirror splashback; and quality 2 pack joinery; as selected by contemporary architects ROTHELOWMAN.

For communal use, the rooftop garden is located on the north-west corner of the building to get the best sun, and best views of the CBD. Outstanding vertical gardens will

View : <https://www.spaceea.com.au/lease/vic/inner-city/south-yarra/residential/apartment/5827685>



Joseph McCurry
03 9257 8788

APARTMENT TYPE 3A

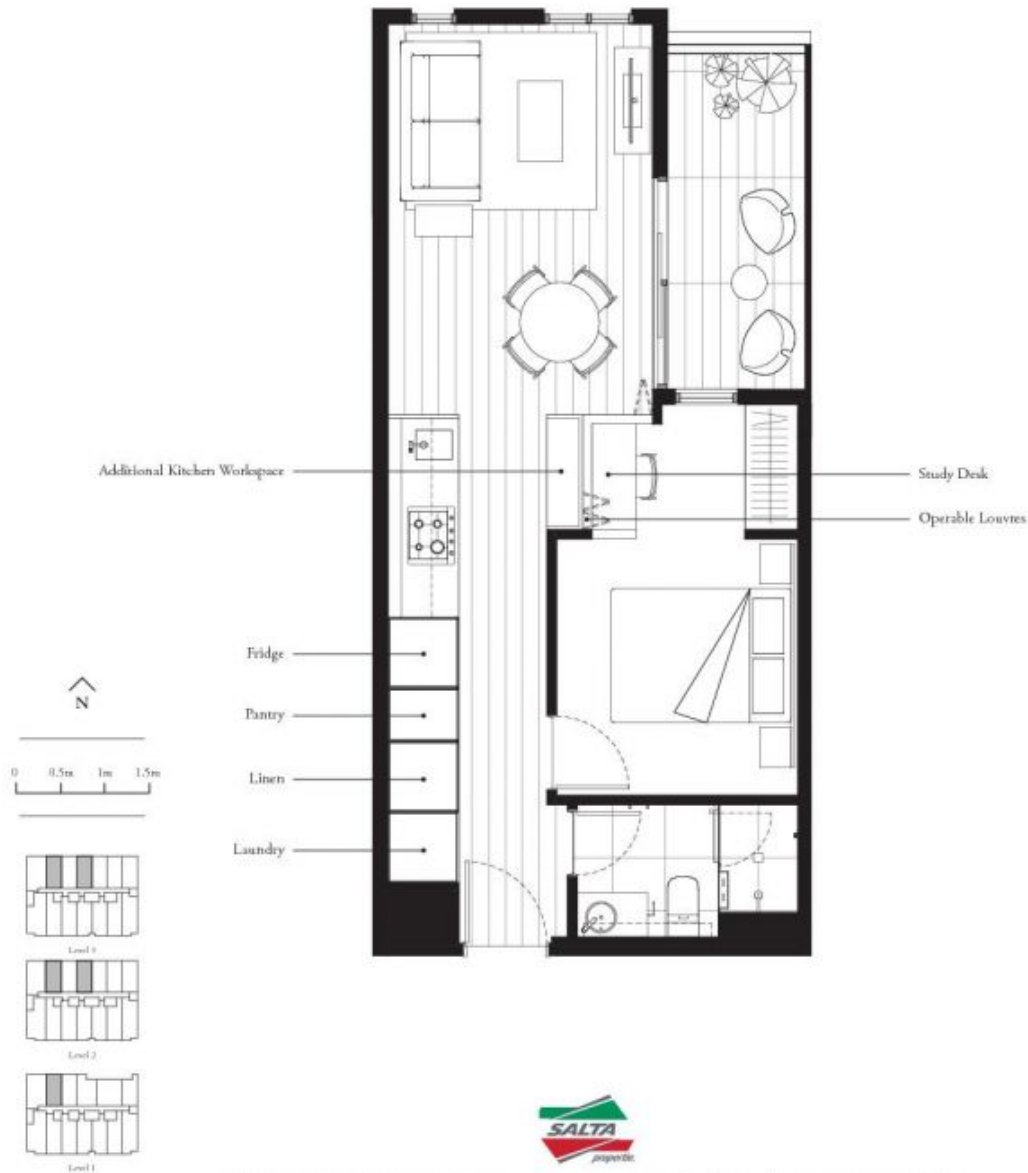
1.06, 2.06, 2.08, 3.06, 3.08

1 Bedroom, 1 Bathroom

Total Area 50.4sqm - 51.8sqm

Apartment Area 44.4sqm - 45.2sqm

Terrace Area 6.0sqm - 6.6sqm



ESSENCE

*These plans are intended as a guide only. The dimensions and areas are approximate only and may not accurately represent the actual dimensions and areas of the apartments or the spaces within them and are subject to change without notice. In addition, locations of collection may vary during construction and fittings and fixtures on these plans are for illustrative purposes only. The areas are generally measured in accordance with the Property Council of Australia method of measurement. Prospective purchasers must rely on their own inspection and should refer to the Contract of Sale and its schedule for all matters to be included in the purchase price of the apartments, including plans, fixtures, fittings, appliances and other parts of sale. Lower furniture and plants are not included. Entries of floor finishes may vary. External areas and landscaping indicative only. Refer to level plans for further information.