



205/12 Wood Street Nunawading VIC

2  1  1 

Modern 2 bedroom apartment tastefully decorated throughout in a magnificent location only minutes walk to the station, cafes and shops and easy access to Eastlink.

View : <https://www.spaceea.com.au/lease/vic/east/nunawading/residential/apartment/5827599>

Features include:

- Superb gas kitchen with dishwasher and stone bench tops
- Spacious air conditioned light filled living and dining area
- 2 generous sized bedrooms with built in robes
- Spacious stylish bathroom
- Large balcony with excellent views
- Basement security car park and more.

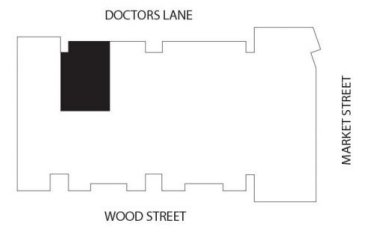
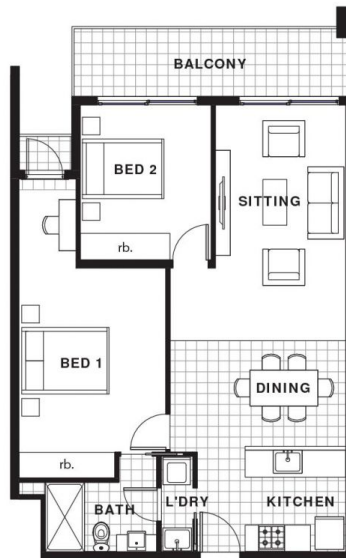
Book to inspect, enquire online, email luke.connell@spaceea.com.au or call 0421 679 021 for more information



Luke Connell
0421 679 021

Second Floor - Apartment 2-05

INTERIOR: 73 sqm
BALCONY: 14 sqm
TOTAL AREA: 87 sqm



DISCLAIMER

The preliminary plan shows the proposed apartment layout plan for Parkwood Apartments as at the date of issue.
Any furniture shown is illustrative only. It does not constitute any representation by the vendor or its agents nor does it form part of any subsequent contract of sale.
All areas are approximate only and are subject to final survey. Prospective purchasers should make their own enquiries.

