

**408/10 Burnley Street Richmond VIC**

1 1 1

This bright and stylish apartment takes full advantage of the glorious city views over Richmond's rooftops as far as the Eureka Tower and city skyline.

**View** : <https://www.spaceea.com.au/lease/vic/inner-city/richmond/residential/apartment/5827543>

Victoria Gardens, Victoria Street's restaurants, Yarra River parklands and transport are all on your doorstep.

Features include :

- large open plan living / kitchen with island bench
- bedroom with built in robe
- large balcony

all with city views

- large bathroom with European laundry
- split system heating and cooling



**Joseph McCurry**  
03 9257 8788

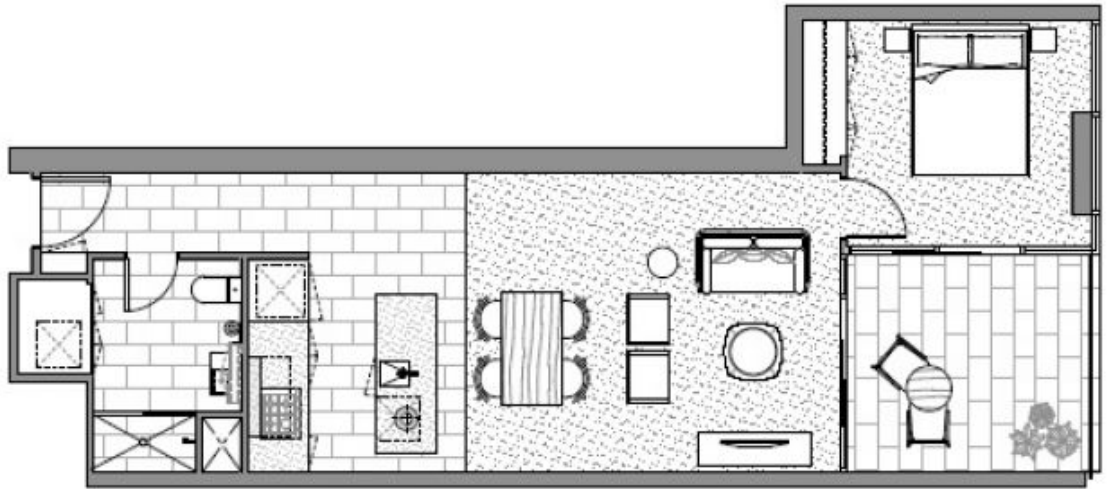
INTERNAL AREA 58sq.m  
TERRACE AREA 9sq.m  
TOTAL AREA 67sq.m

---  
SCALE  
1:60

---  
ARCHITECT  
SJB Architects  
HP&G Interiors

---  
PROJECT BY  
Salta Properties

---  
TYPE 21  
A208  
A308  
A408  
A508  
A608



KEY PLAN  
Level 2

