



Level 6/607/8 Burnley Street Richmond VIC

1  1  1 

Features include:

- light and open living / dining space
- North East aspect with views over Victoria Street to the Yarra Trail
- alfresco balcony
- Smeg-equipped designer kitchen with dishwasher (gas cook top, electric oven)
- modern bathroom
- European laundry
- car space with storage cage
- ground floor café
- gym, sauna and pool
- tram stop and Yarra trail across Victoria Street
- Victoria Gardens Shopping Centre - Coles, Hoyts, Ikea - across Burnley Street

View : <https://www.spaceea.com.au/lease/vic/inner-city/richmond/residential/apartment/5827376>



Joseph McCurry
03 9257 8788

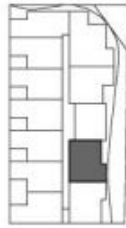


Apartment Type K

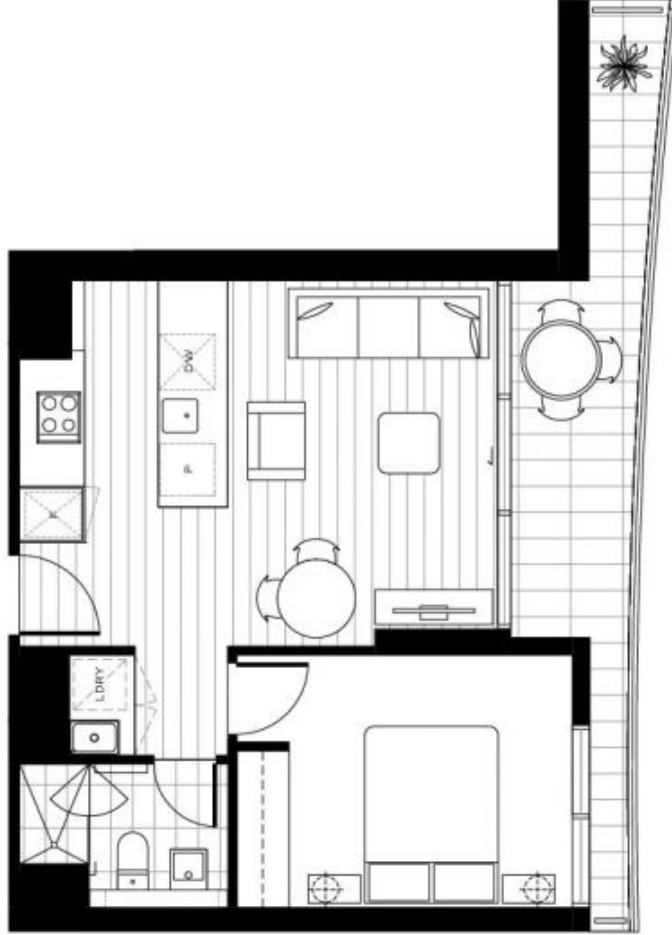
2,10, 4,10, 6,07

- 1 Bedroom
- 1 Bathroom

Total Area 55.4sqm
 Apartment Area 44.7sqm
 Terrace Area 10.7sqm



0 2.5m



Please note that this floor plan is indicative only and not to scale. Changes may be made during development, and dimensions, setout, finishes and specifications are subject to change in accordance with provisions of the Contract of Sale. The furniture depicted is not included with any sale and should not be taken to indicate the final position of power points, TV connection points and the like. Bulkheads necessary for services and structure are not depicted.

