



Level 2/207/8 Burnley Street Richmond VIC

2 1 1

Stunning contemporary apartment in the North West corner of Richmond.

View : <https://www.spaceea.com.au/lease/vic/inner-city/richmond/residential/apartment/5827357>

Near new apartment's features include:

two bedrooms,
central bathroom with floor to ceiling tiling and clever storage,
light open-plan living / dining space,
living room with alfresco balcony with 180 degree views West to the city, North to green Studley Park / Kew and East to Hawthorn,
Master bedroom with private North East facing balcony,
Smeg-equipped designer kitchen (gas cook top, electric oven and integrated dishwasher),
car space and storage cage,
gym and pool,



Joseph McCurry
03 9257 8788

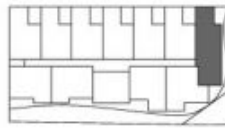


Apartment Type R

2.07, 4.07

2 Bedroom
1 Bathroom

Total Area 83.2sqm
Apartment Area 61.5sqm
Terrace Area 21.7sqm



0 2.5m



Please note that this floor plan is indicative only and not to scale. Changes may be made during development, and dimensions, setout, finishes and specifications are subject to change in accordance with provisions of the Contract of Sale. The furniture depicted is not included with any sale and should not be taken to indicate the final position of power points, TV connection points and the like. Bulkheads necessary for services and structure are not depicted.

