



204/8 Burnley Street Richmond VIC

1 1 1

Near new apartment - features include:

large light open-plan living / dining space,
outdoor room looking over Williams Reserve,
bathroom with floor to ceiling tiling and clever storage,
Smeg-equipped designer kitchen (gas cook top, electric
oven and integrated dishwasher),
car space and storage cage,
ground level café,
gym and pool,
moments from the Yarra River trail and city transportation,
directly opposite Victoria Gardens.

View : <https://www.spaceea.com.au/lease/vic/inner-city/richmond/residential/apartment/5827317>



Joseph McCurry
03 9257 8788



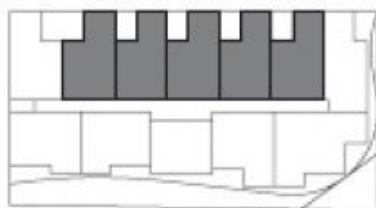
Apartment Type H

2.02*, 2.03, 2.04, 2.05, 2.06
4.02, 4.03, 4.04, 4.05, 4.06

1 Bedroom
1 Bathroom

Total Area 51.3sqm
Apartment Area 45.6sqm
Terrace Area 5.7/7.1*sqm

*Denotes larger balcony



0 2.5m

