



D906/615 Victoria Street Abbotsford VIC

2 1 1

This new apartment 9th floor apartment enjoys 180 degrees views including the Yarra River, Skipping Girl and beyond.

View : <https://www.spaceea.com.au/lease/vic/inner-city/abbotsford/residential/apartment/5827306>

Features include a formal entrance hall leading to a sun-filled living area and your own private East facing balcony.

There are two spacious bedrooms, both with robes and a luxurious central bathroom.

The modern kitchen boasts stainless Euro appliances including dishwasher and is finished with gleaming stone bench tops.

This apartment comes complete with a secure basement car park and storage cage plus membership to the fully



Joseph McCurry
03 9257 8788

Syde 18

2 Bedroom & 1 Bathroom

Areas

Apartment	71.6m ²
Balancey	9.0m ²
Total	80.6m ²

Architect

SJB Architects & SJB Interiors

Developer

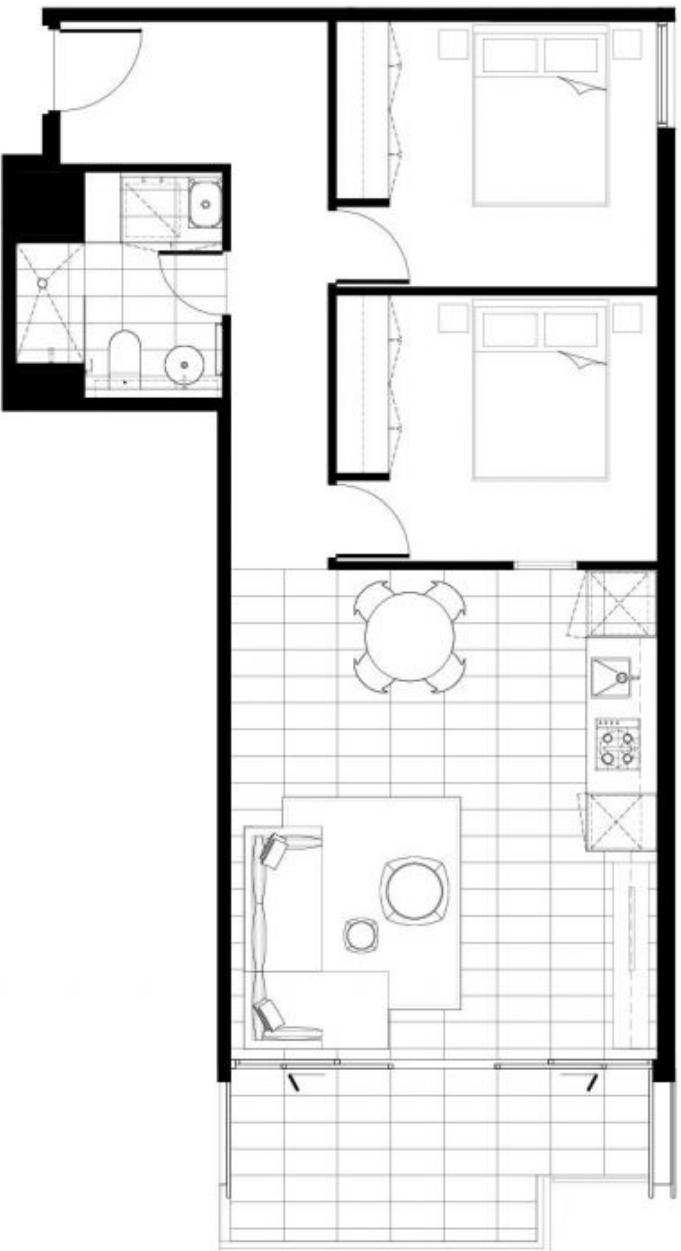
Sabia Properties

Scale

1:50

Apartment

D306
D307
D308



Please note that this floor plan was produced prior to completion of construction and is indicative only and not to scale. Changes may be made during development and dimensions, site areas, fixtures and specifications are subject to change without notice as accordance with the provisions of the Contract of Sale. The furniture depicted is not included with the sale and should not be taken to indicate the final position of powerpoints, TV connection points and the like. Prospective purchasers must rely on their own enquiries. Builders' responsibility for services and structure are not depicted.

