



B507/609 Victoria Street Abbotsford VIC

1 1 1

A terrific opportunity to secure this delightful apartment in the Vibrant 'Green Square Complex'.

Featuring a generously proportioned bedroom with built in robes, a spacious living area and a very stylish kitchen featuring stainless Euro appliances and stone bench tops.

Ideally located just a 'Stones Throw' from the city tram stop, Victoria Gardens shopping complex and Yarra River parklands makes this the ideal inner city location.

This apartment comes complete with a private East facing balcony, a secure basement car space with storage cage and membership to the fully equipped gymnasium, indoor pool and sauna.

View : <https://www.spaceea.com.au/lease/vic/inner-city/abbotsford/residential/apartment/5827299>



Joseph McCurry
03 9257 8788

Type 43

1 Bedroom & 1 Bathroom

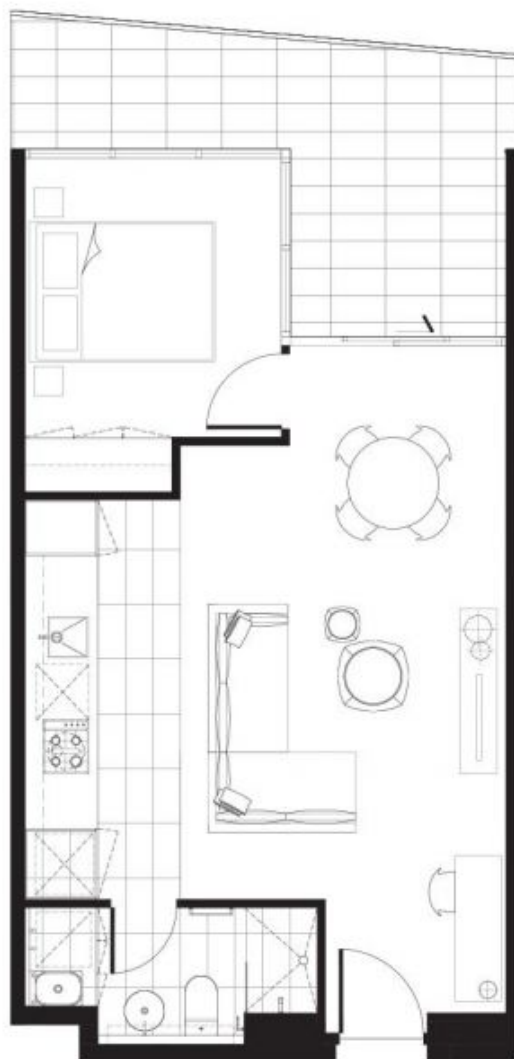
Area	
Apartment	498m ²
Balcony	12.2m ²
Total	620.2m ²

Architect
SJB Architects & SJB Interiors

Developer
Saba Properties

Scale
1:50

Apartment
B527



Please note that this floor plan was produced prior to completion of construction and is indicative only and not to scale. Changes may be made during development and dimensions, the layout, finishes and specifications are subject to change without notice in accordance with the provision of the Contract of Sale. The furniture depicted is not included with any sale and should not be taken to indicate the final position of power points, TV connection points and the like. Prospective purchasers must rely on their own enquiries. Builders are not responsible for services and structures are not depicted.



Level 5