

315/30 Burnley Street Richmond VIC

2 1 1

Conveniently located close to Victoria Gardens Shopping Centre, city tram stop and the Yarra River Parklands and bike tracks, this apartment features a sun-filled living area and adjoining modern kitchen offering stainless Euro appliances including dishwasher. Bedrooms both have built in robes.

This apartment comes complete with reverse cycle A/C, a secure basement car park with storage cage and exclusive use of the heated pool, gymnasium and sauna.

View : <https://www.spaceea.com.au/lease/vic/inner-city/richmond/residential/apartment/5827298>



Joseph McCurry
03 9257 8788

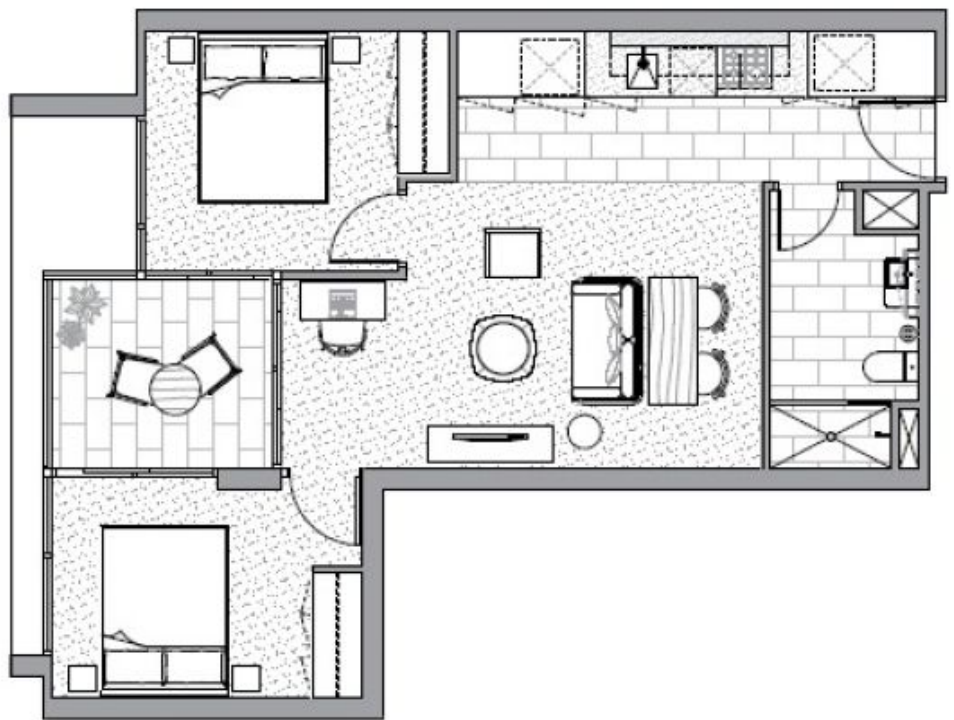
INTERNAL AREA 57sq.m
TERRACE AREA 6sq.m
TOTAL AREA 63sq.m

SCALE
1:60

ARCHITECT
SJB Architects
HP&G Interiors

PROJECT BY
Salta Properties

TYPE 3
C115
C215
C315
C415
C515



KEY PLAN
Level 1

