

408/10 Burnley Street Richmond VIC

1 1 1

This bright and stylish apartment takes full advantage of the glorious city views over Richmond's rooftops as far as the Eureka Tower and city skyline.

View : <https://www.spaceea.com.au/lease/vic/inner-city/richmond/residential/apartment/5827294>

Victoria Gardens, Victoria Street's restaurants, Yarra River parklands and transport are all on your doorstep.

Features include :

- large open plan living / kitchen with island bench
- bedroom with built in robe
- large balcony

all with city views

- large bathroom with European laundry
- split system heating and cooling



Joseph McCurry
03 9257 8788

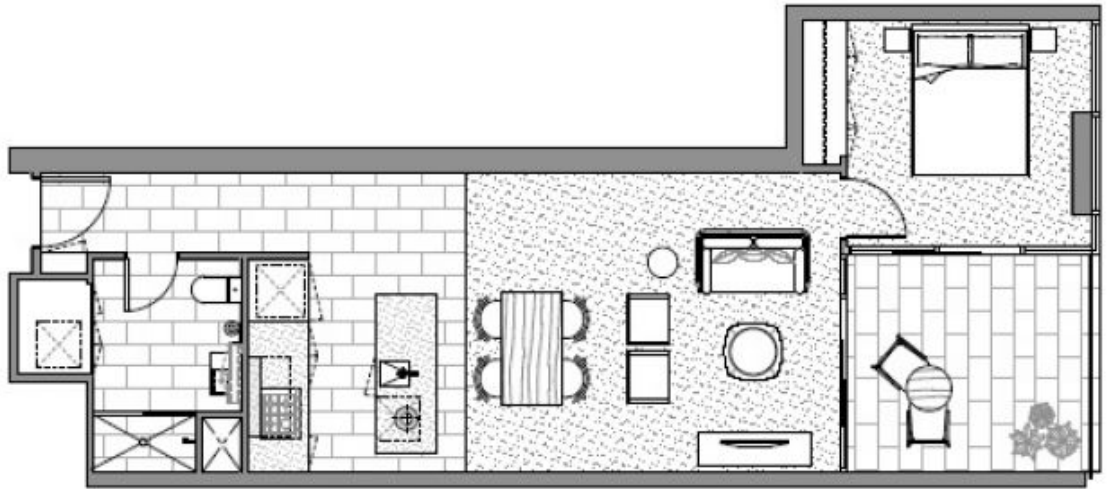
INTERNAL AREA 58sq.m
TERRACE AREA 9sq.m
TOTAL AREA 67sq.m

SCALE
1:60

ARCHITECT
SJB Architects
HP&G Interiors

PROJECT BY
Salta Properties

TYPE 21
A208
A308
A408
A508
A608



KEY PLAN
Level 2

