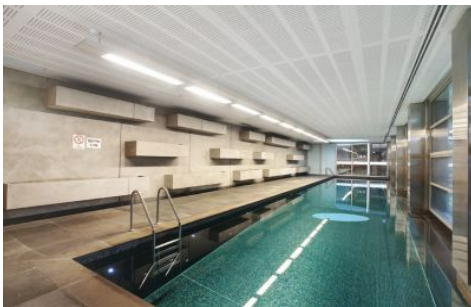
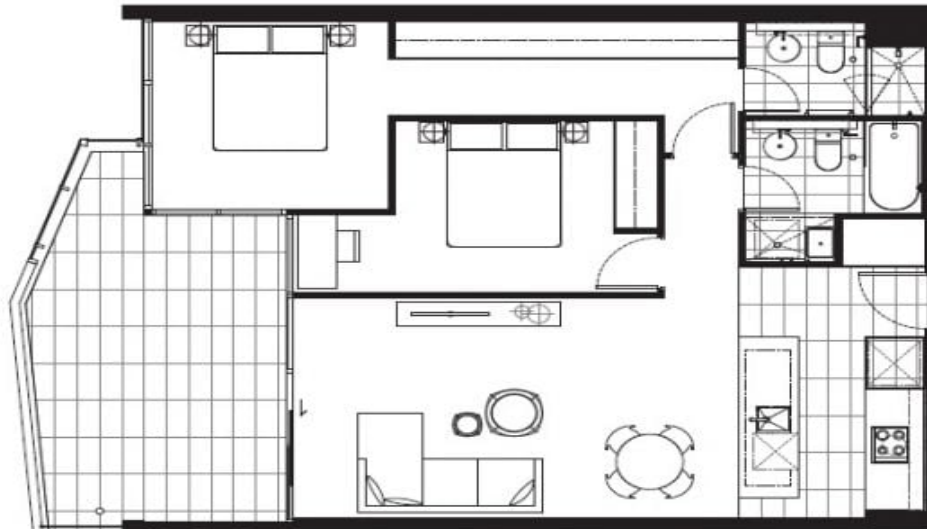


APARTMENT B4.01



2 Bedroom & 2 Bathroom

Area	
Apartment	79.97m ²
Balcony	13.04m ²
Total	93.01m ²
Scale	1:50 @ A3



B401/609 Victoria Street Abbotsford VIC

2 2 1

Garden view apartment with all of the conveniences right at your doorstep :

- Two spacious bedrooms with mirrored robes
- Two luxurious bathrooms
- Light living room
- Gourmet kitchen featuring terrific island bench, ample cupboard space, stainless Euro appliances and stone bench tops
- Large balcony
- Secure car space and storage cage are also included

This apartment comes complete with Health club featuring heated pool, gymnasium and sauna.

Moments to Victoria Gardens shopping precinct, Yarra River bike trails, parklands, all transport and the CBD just a

View : <https://www.spaceea.com.au/lease/vic/inner-city/abbotsford/residential/apartment/5827291>



Joseph McCurry
03 9257 8788

APARTMENT B4.01



2 Bedroom & 2 Bathroom

Area	
Apartment	79.97m ²
Balcony	19.04m ²
Total	99.01m ²

Scale
1:50 (A3)

