



Level 2/205/8 Burnley Street Richmond VIC

1 1 1

One year old apartment with features including :

- light and open living / dining space
- city views over the adjacent park
- enclosed outdoor room
- Smeg-equipped designer kitchen with dishwasher (gas cook top, electric oven)
- modern bathroom
- car space and storage cage
- ground floor café
- health and well-being facilities including gym and pool.

Moments from Yarra River trails, cycling tracks and city transportation.
Directly opposite Ikea and Victoria Gardens Shopping Centre.

View : <https://www.spaceea.com.au/lease/vic/inner-city/richmond/residential/apartment/5827289>



Joseph McCurry
03 9257 8788



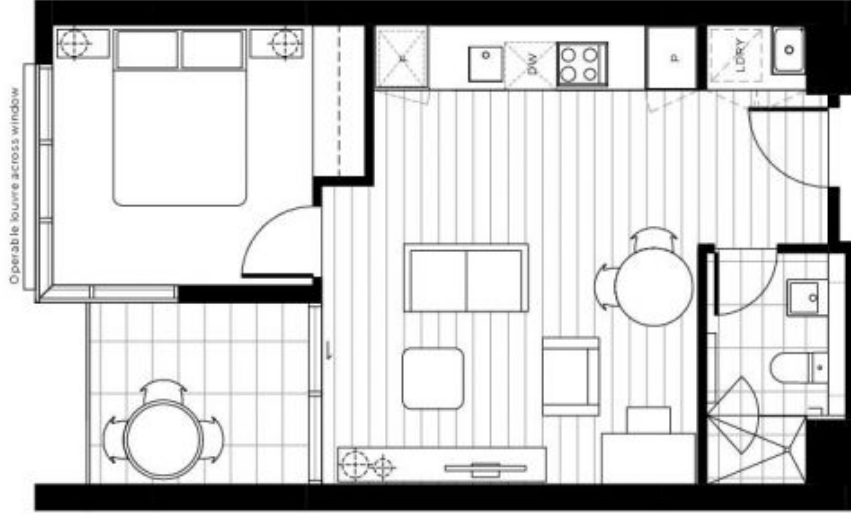
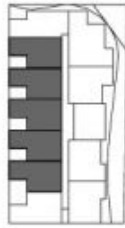
Apartment Type H

2.02*, 2.03, 2.04, 2.05, 2.06
4.02, 4.03, 4.04, 4.05, 4.06

1 Bedroom
1 Bathroom

Total Area 61.3sqm
Apartment Area 45.6sqm
Terrace Area 5.7/7.1sqm

*Does not include balcony



Please note that this floor plan is indicative only and not to scale. Changes may be made during development, and dimensions, setout, finishes and specifications are subject to change in accordance with provisions of the Contract of Sale. The furniture depicted is not included with any sale and should not be taken to indicate the final position of power points, TV connection points and the like. Bulkheads necessary for services and structure are not depicted.

