



C604/609 Victoria Street Abbotsford VIC

1 1

This bright gem is the ideal inner city pad for the Astute Renter!

View : <https://www.spaceea.com.au/lease/vic/inner-city/abbotsford/residential/apartment/5827285>

In as new condition it offers a spacious living area with a delightful Northerly aspect featuring :

- adjoining gourmet kitchen with quality stainless appliances
- ample cupboard space and stone bench tops
- reverse cycle air conditioner
- private balcony
- membership to the health club including heated pool, sauna and fully equipped gymnasium complete the package.



Joseph McCurry
03 9257 8788

Conveniently located close to Victoria Gardens shopping precinct and only minutes from the CBD with the tram right

Type 60

1 Bedroom & 1 Bathroom

Areas
 Apartment 48.30m²
 Balcony 6.00m²
 Total 54.30m²

Architect
 SJB Architects & SJB Interiors

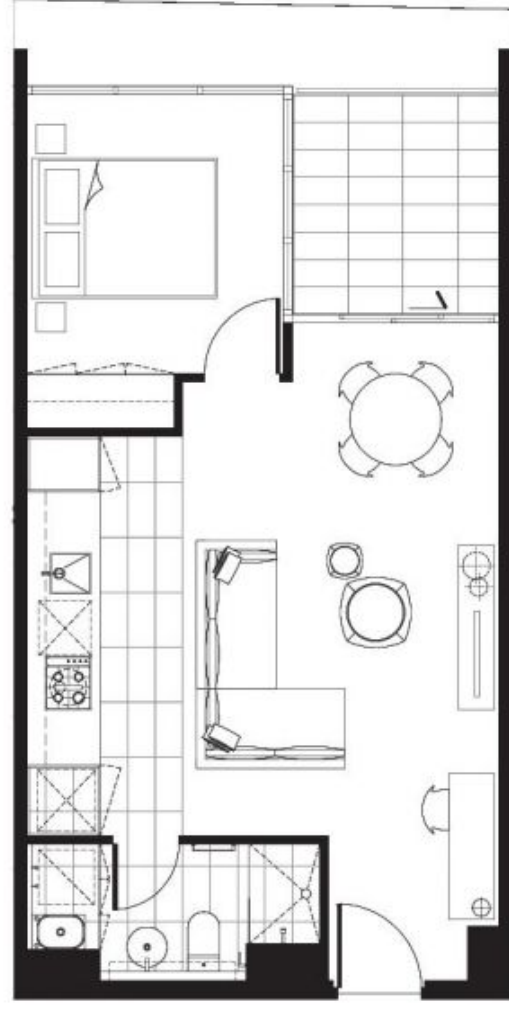
Developer
 Salta Properties

Scale
 1:50

Apartment
 C60a
 C70a
 C80a



Level 6



Please note that this floor plan was produced prior to completion of construction and is indicative only and not to scale. Changes may be made during development and dimensions, the finish, fixtures and specifications are subject to change without notice in accordance with the provision of the Contract of Sale. The furniture depicted is not included with any sale and should not be taken to indicate the final position of power points, TV connection points and the like. Prospective purchasers must rely on their own enquiries. Builders are necessary for services and structures not yet depicted.

