



613/20 Burnley Street Richmond VIC

1 1 1

- Light filled sixth floor apartment
- Views of Melbourne's CBD
- Very large (58m²) living area with 9m² outdoor room
- Kitchen with island bench, stone bench tops, and Stainless Miele appliances (gas stove, electric oven and dishwasher) AND new fridge
- Good sized bedroom
- Roomy bathroom with European laundry AND washing machine
- Secure entrance

View : <https://www.spaceea.com.au/lease/vic/inner-city/richmond/residential/apartment/5827274>

The complex has heated pool, gymnasium and sauna ideally located opposite Victoria Gardens shopping centre, public transport and a short stroll to Yarra River parklands, bike and walking tracks.

This apartment is partially furnished - with desk and sofa

APARTMENT TYPE 24
1 Bedroom & 1 Bathroom

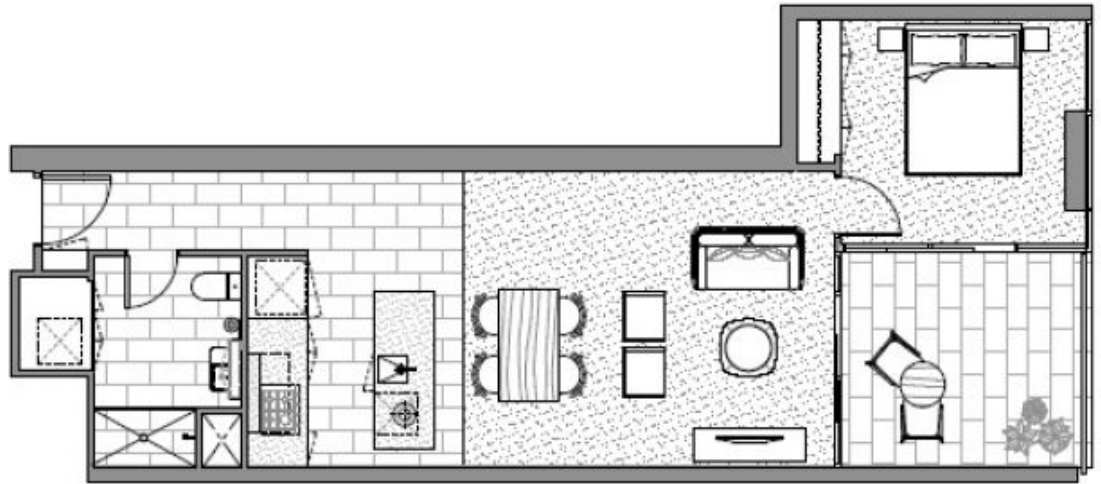
INTERNAL AREA 58sq.m
TERRACE AREA 9sq.m
TOTAL AREA 67sq.m

SCALE
1:60

ARCHITECT
SJB Architects
HP&G Interiors

PROJECT BY
Satta Properties

TYPE 24
B209
B213
B309
B313
B409
B413
B509
B513
B609
B613



KEY PLAN
Level 2

