



302/10 Burnley Street Richmond VIC

2 2 1

This spacious 2 bedroom apartment enjoys an Easterly aspect with a sun-filled living area! The adjoining gourmet kitchen features stone bench tops, stainless Miele appliances and large Island bench.

There are two luxurious bathrooms, air-conditioning and an extra large, covered balcony that's ideal for entertaining. Conveniently located close to Victoria Gardens Shopping Centre, Yarra River bike and walking tracks and public transport right on your doorstep! Comes complete with secure basement parking a storage cage, and exclusive use of the heated pool, gym and sauna.

View : <https://www.spaceea.com.au/lease/vic/inner-city/richmond/residential/apartment/5827267>



Joseph McCurry
03 9257 8788

APARTMENT TYPE 25
2 Bedroom & 2 Bathroom

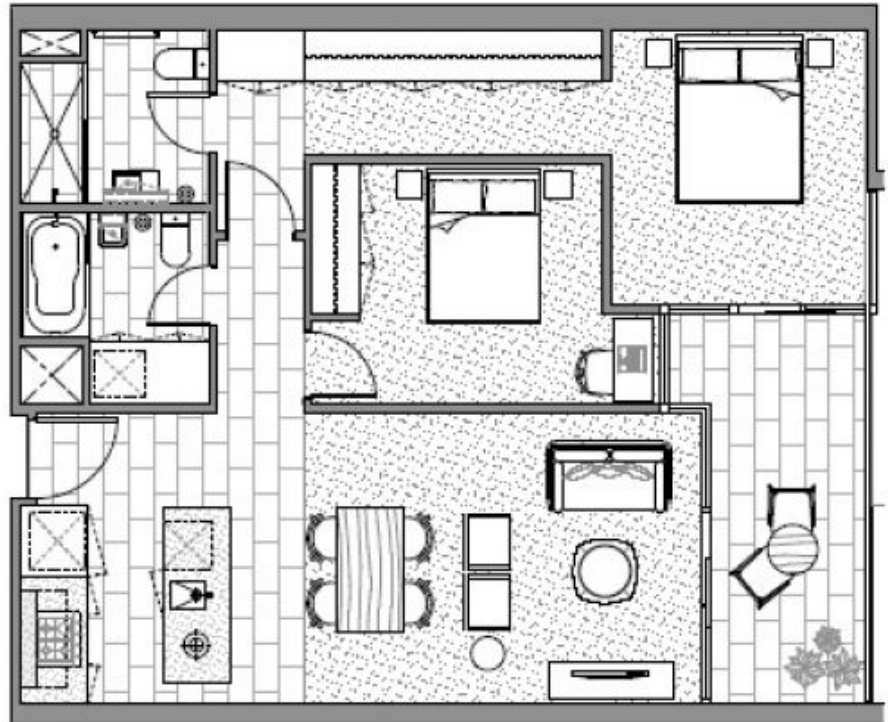
INTERNAL AREA 78sq.m
TERRACE AREA 9sq.m
TOTAL AREA 87sq.m

SCALE
1:60

ARCHITECT
SJB Architects
HP&G Interiors

PROJECT BY
Salta Properties

TYPE 25
A310
A410
A510
A610



KEY PLAN
Level 3

