

### Level 5/8 Burnley Street Richmond VIC

1 1 1

Currently under construction, three East facing apartments are still available in this soon to be completed development.

**View :** <https://www.spaceea.com.au/sale/vic/inner-city/richmond/residential/apartment/5826998>

Located directly opposite the iconic 'Little Audrey' Skipping Girl Vinegar sign in the heart of Richmond, 'A Place To Live' is close to Victoria Street's restaurant strip and the Bridge Road retail precinct.

Fitzroy's dining and bar scene is a short tram ride away, as are Collingwood's hipster and fashion scene, cafes and sporting venues.

Nearby schools and university campuses create an authentic sense of community, and the beautiful Yarra River parklands provide an immediate escape to endless recreational spaces for those who enjoy an outdoor



**Joseph McCurry**  
03 9257 8788



## Apartment Type E

1.08, 3.08, 5.09

1 Bedroom  
1 Bathroom

Total Area 60.6sqm  
Apartment Area 47.2sqm  
Terrace Area 13.4sqm



Visit the Display Centre Ground Floor 610 Victoria Street Richmond, contact Jamie Weir 0431 400 808, Andrew Howard 0433 206 394  
[www.aplacetolive.com.au](http://www.aplacetolive.com.au)

Please note that this floor plan is indicative only and not to scale. Changes may be made during development, and dimensions, setout, fixtures and specifications are subject to change to accommodate with provisions of the Contract of Sale. The furniture depicted is not included with any sale and should not be taken to indicate the final position of items, points, TV connections, and the like. Buildings necessary for services and structure are not depicted.



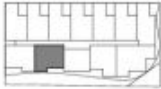


## Apartment Type F

1,10, 3,10, 5,30

1 Bedroom  
1 Bathroom

Total Area 55.8sqm  
Apartment Area 44.7sqm  
Terrace Area 10.7sqm



Visit the Display Centre Ground Floor 610 Victoria Street Richmond, contact Jamie Weir 0431 400 808 Andrew Howard 0433 206 394  
[www.aplacetolive.com.au](http://www.aplacetolive.com.au)

Please note that this floor plan is indicative only and not to scale. Changes may be made during development, and dimensions, setout, fixtures and specifications are subject to change to accommodate with provisions of the Contract of Sale. The furniture depicted is not included with any sale and should not be taken to indicate the final position of items, points, TV connections, and the like. Buildings necessary for services and structure are not depicted.

