



207/35-39 Earl Street Kew VIC

2 2 1

This luxurious two bedroom, two bathroom second floor apartment in a boutique block and with an abundance of natural light boasts exceptional value in one of Melbourne's most prestigious locations.

Boasting an excellent floor plan, this spacious but quiet apartment features a gourmet kitchen with a movable island bench, integrated dishwasher and gas hot plates, spacious living and dining with timber floors, two double bedrooms with built in robes, two stylish bathrooms with ensuite to master, split system heating and cooling, private balcony, secure basement car park, large storage locker and more.

Perfect proximity to Willsmere Village shopping, Eglington and Victoria Park, bike/walking tracks, private golf courses, and Eastern Freeway for a speedy city commute.

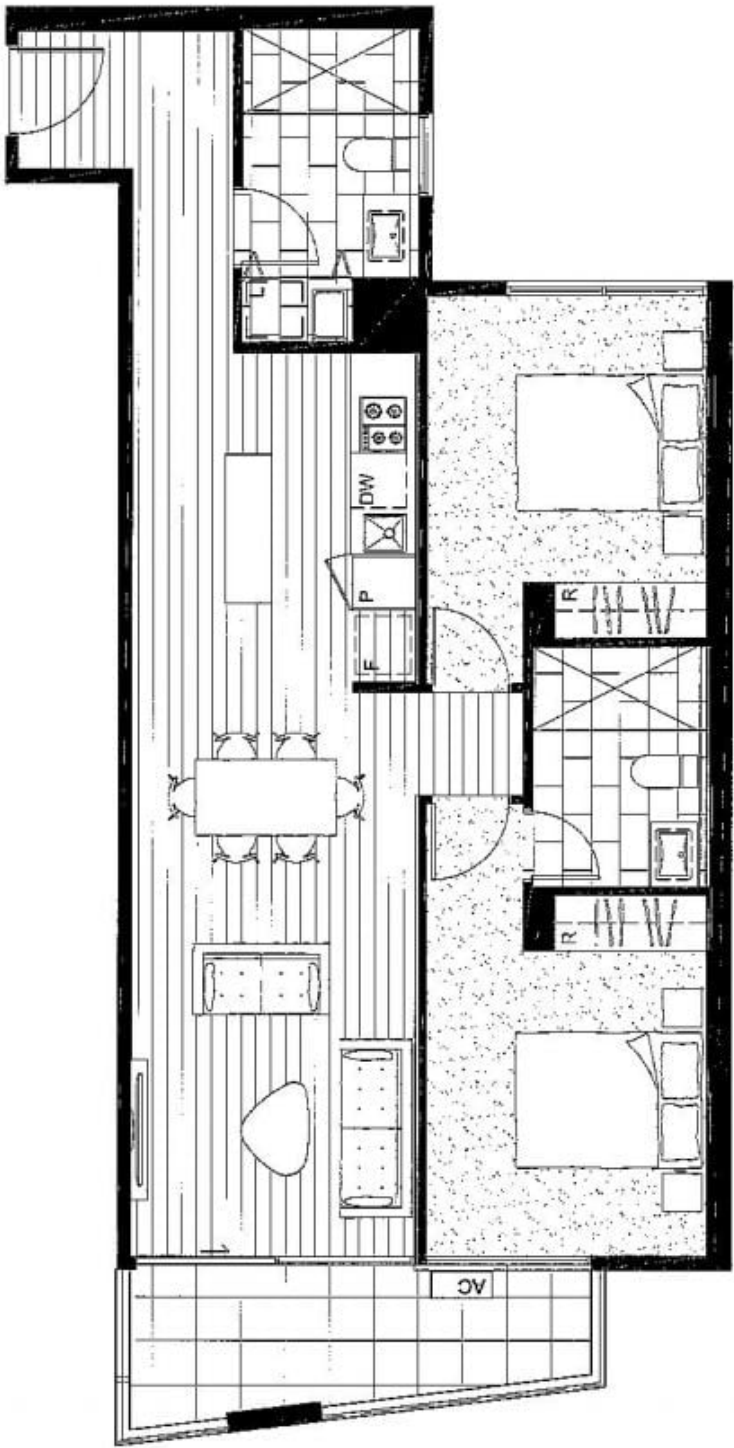
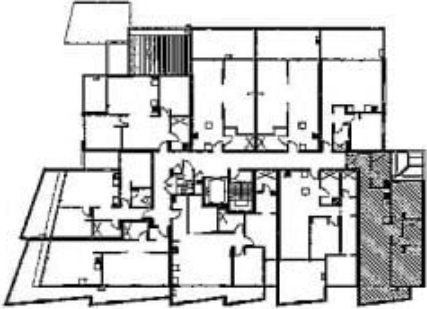
View : <https://www.spaceea.com.au/sale/vic/east/kew/residential/apartment/5826987>

35-49 Earl Street
Kew

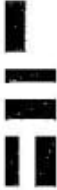
2 Bed, 2 Bath
Apartment 2.07

Approximate Area	
Internal Area	82.0m ²
External Area	9.5m ²
Total	91.5m ²

Key Plan:



CARABOTT
HOLT
TURCINOV



Disclaimer: The particulars are provided as a general guide only for the purposes of providing purchasers with information and are not intended to constitute an offer of any kind. The purchaser should conduct their own due diligence and seek professional advice before purchasing. The architect and other consultants are not responsible for the accuracy of the information provided and accept no liability for any loss or damage arising from the use of the information. The architect and other consultants are not responsible for the accuracy of the information provided and accept no liability for any loss or damage arising from the use of the information.



DATE: 15/01/2024