



G06/35-39 Earl Street Kew VIC

2 2 1

Located on the ground floor, this brand new stylish two bedroom apartment is superbly appointed throughout and offers parkside living.

View : <https://www.spaceea.com.au/sale/vic/east/kew/residential/apartment/5826985>

- Main bedroom with walk through robes, study nook and en-suite
- Second bedroom with built in robes
- Natural light filled living and dining areas complete with timber floors
- Huge covered outdoor entertaining balcony
- Gourmet kitchen offering island bench, gas S/S appliances, stone bench tops and integrated dishwasher and glass splash back
- Fully tiled modern bathroom including Euro laundry
- Split system reverse cycle heating/cooling
- One secure basement car park plus storage cage

35-49 Earl Street
Kew

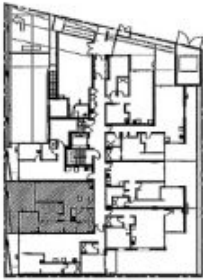
2 Bed, 2 Bath + Study

Apartment G.06

Approximate Area

Internal Area	81.5m ²
External Area	27.5m ²
Total	109.0m ²

Key Plan



CARABOTT
HOLT
TURCINOV



Disclaimer: The particulars set out are a general outline for the guidance of intending purchasers and do not constitute an offer or contract. All dimensions, drawings, references to conditions and necessary permissions for use and other details are given in good faith and are believed to be correct, but any intending purchaser should not rely on them as statements or representations of fact, but must satisfy themselves by independent observation of the correctness of such facts, and make necessary enquiries. The architect/author of these particulars accepts no liability for any errors or omissions or for any consequences of their use. The information is based on the Property Council's records of land and other interests in the Property.

