

303/39 Earl Street Kew VIC

2 2 2

This must see two bedroom apartment is only 1 of 4 apartments located on the top floor and in a prime location close to Willsmere Village shopping strip, Eglinton and Victoria park, bike and walking tracks, private golf courses, Kew Junction, Eastern Fwy, private schools such as Carey Grammar, MLC, Trinity Grammar and more.

Detailed with quality fixtures and fittings, several features include gourmet kitchen with large island bench, Neff stainless steel appliances and gas cooking. Living area complete with timber floors opening to a huge private outdoor balcony with sweeping views to the Dandenong Ranges.

Two generous bedrooms both with built in robes and main bedroom with en-suite. Fully tiled modern bathrooms and a separate study area ideal for the home office. Other

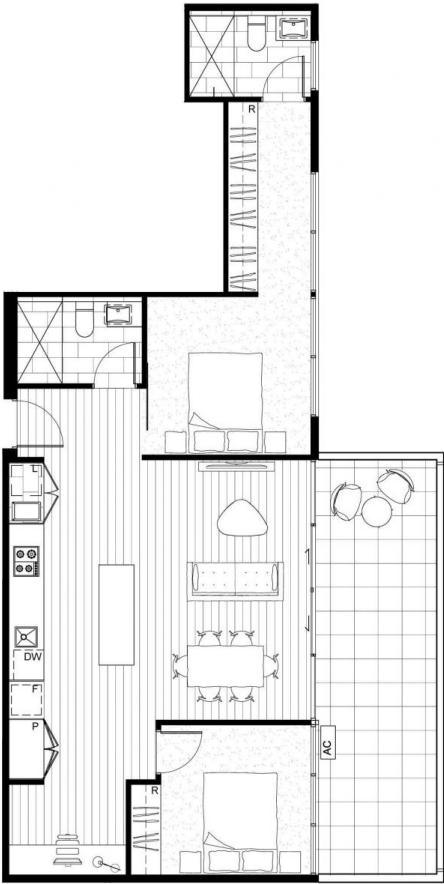
View : <https://www.spaceea.com.au/sale/vic/east/kew/residential/apartment/5826966>

35-49 Earl Street
Kew

2 Bed, 2 Bath + Study
Apartment 3.03

| | |
|------------------|---------------------|
| Approximate Area | |
| Internal Area | 86.5m ² |
| External Area | 21.0m ² |
| Total | 107.5m ² |

Key Plan



CARABOTT
HOLT
TURCINOV



Disclaimer: The particulars are set out as a general outline for the guidance of intending purchasers and do not constitute an offer or contract. All descriptions, dimensions, references to conditions and necessary permissions for use and other details are given in good faith and are believed to be correct, but any intending purchasers should not rely on them as statements or representations of fact, but must satisfy themselves by inspection or otherwise to the correctness of each item, and where necessary seek advice. No third party supplier or their agent has any authority to make or give any representations or warranty in relation to this property. Areas are calculated based on the Property Council of Australia Method of Measurement for Residential Property.



Date: FEB 14 Revision: F

