



G05/35-39 Earl Street Kew VIC

2 2 1

Located on the ground floor of a stunning boutique complex, this spacious 2 bedroom/2 bathroom apartment (91sqm approx. internal) is superbly appointed throughout and offers an effortless turnkey lifestyle just moments from relaxed village cafes and eateries.

- Main bedroom with walk through robes, study nook and en-suite
- Second robed bedroom with private balcony and adjoining bathroom
- Natural light-filled living/dining areas flowing to second outdoor balcony
- Gourmet kitchen featuring movable island bench, integrated dishwasher and glass splash back
- Euro laundry
- Split system heating/cooling
- Secure basement car-space plus storage cage

Perfect proximity to Willsmere Village shopping, Eglington

View : <https://www.spaceea.com.au/sale/vic/east/kew/residential/apartment/5826904>

35-49 Earl Street
Kew

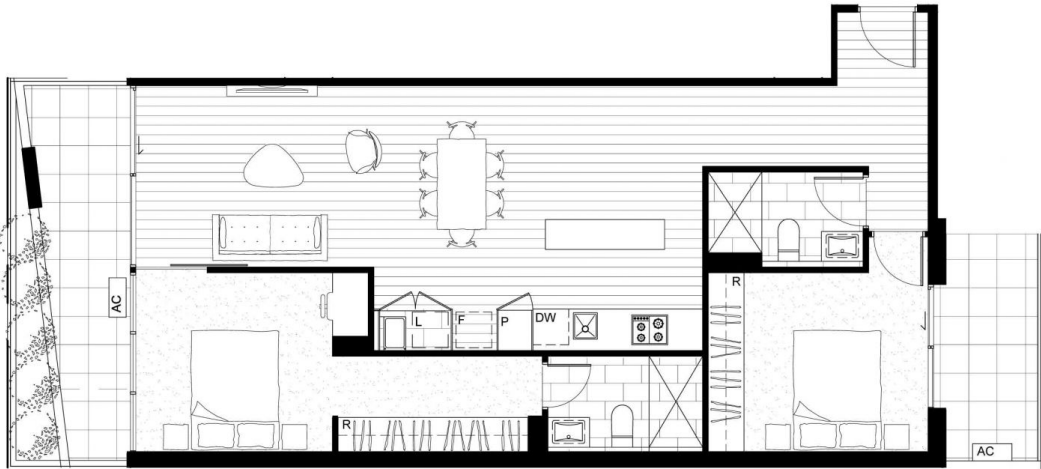
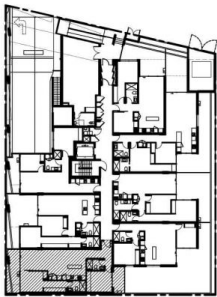
2 Bed, 2 Bath

Apartment G.05

Approximate Area

Internal Area	91.5m ²
External Area	19.0m ²
Total	110.5m ²

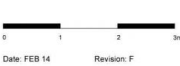
Key Plan:



CARABOTT
HOLT
TURCINOV



Disclaimer: The particulars are set out as a general outline for the guidance of intending purchasers and do not constitute an offer or contract. All descriptions, dimensions, references to conditions and necessary permissions for use and other details are given in good faith and are believed to be correct, but any intending purchasers should not rely on them as statements or representations of fact, but must satisfy themselves by inspection or otherwise to the correctness of each item, and where necessary seek advice. No third party supplier or their agent has any authority to make or give any representations or warranty in relation to this property. Areas are calculated based on the Property Council of Australia Method of Measurement for Residential Property.



Date: FEB 14 Revision: F

