



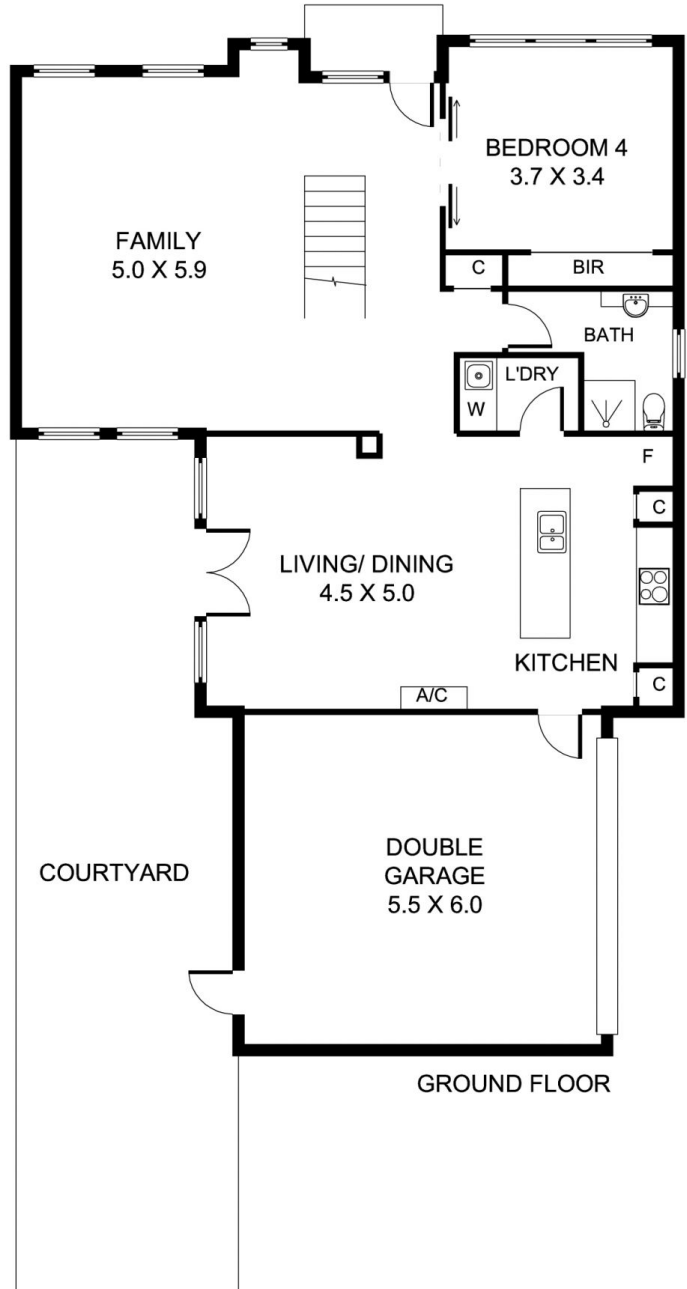
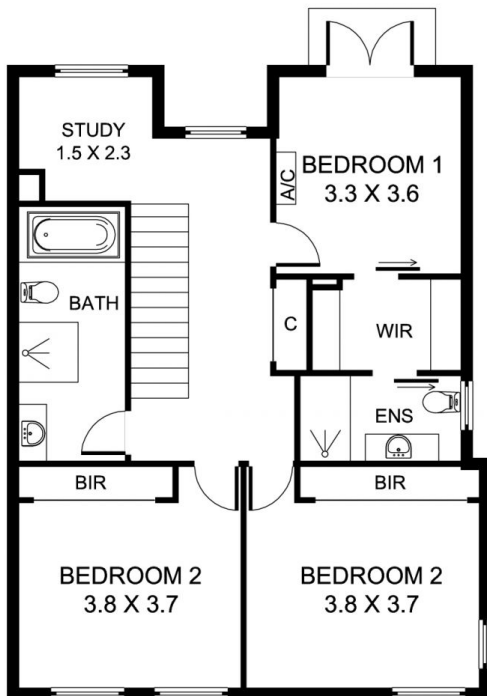
**4/23 Ellindale Avenue McKinnon VIC**

4 🏠 3 🚗 2 🚗

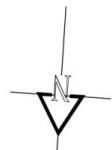
Beautifully presented and very spacious 4 bedroom home in a quiet but convenient location and situated in the highly sought after McKinnon School zone. Features include modern gas kitchen and adjoining family area, spacious sun-filled lounge and dining, 4 double bedrooms with built in robes and study area, 3 stylish bathrooms including en-suite to master. Other features include large private courtyard, double garage, polished timber floors, central heating & cooling, ducted vacuum system and more.

**View** : <https://www.spaceea.com.au/sale/vic/bayside/mckinnon/residential/townhouse/5826834>

# 4/23 Ellendale Street - McKinnon



Building Area: 214m<sup>2</sup> (approx)



Please note: Whilst every attempt is made to ensure accuracy, all measurements, positioning, fixtures, fittings and any other data shown are an approximate representation. Particulars given are for general information only and do not constitute any representation on the part of the vendor or agent. Included in the total building area: all internal floor space, internal walls, permanent garages, etc. Not included: any external walls, carports, sheds, porches outdoor areas, verandahs, pergolas, decks, balconies etc. Please note all square metres are approximate.