

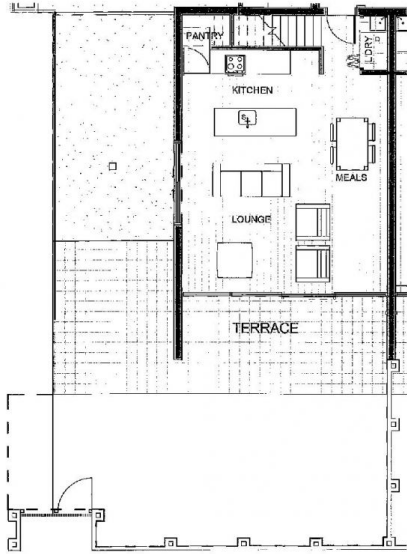


**1/160 Power Street Hawthorn VIC**

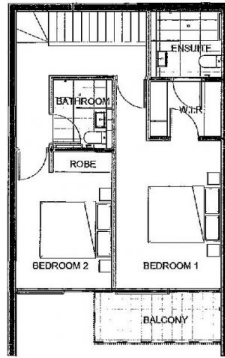
2 2 1

- > Superb design and functionality
- > Light filled main bedroom with WIR & ensuite
- > Stunning new town residence with elite dimensions and enduring style
- > High end finishes through out
- > Streamline kitchen boasting Miele appliances
- > Second bedroom with BIR
- > Entertainers terrace & garden
- > Bright living zones
- > Close proximity to the CBD, Yarra Trails and Glenferrie Road shops
- > Ample storage

**View** : <https://www.spaceea.com.au/sale/vic/east/hawthorn/residential/townhouse/5826826>



2 SUBDIVISION PLAN TOWN HOUSE 01 GF  
SD10 1:100



1 SUBDIVISION PLAN TOWN HOUSE 01 FF  
SD10 1:100

LOT 10 - APARTMENT G01  
GROUND FLOOR AREA: 49.00m<sup>2</sup>  
FIRST FLOOR AREA: 46.83 m<sup>2</sup>  
BALCONIES: 5.46m<sup>2</sup>  
GARDEN(INC TERRACE): 107.87m<sup>2</sup>

