



**1001/80 Lorimer Street Docklands VIC**

3 3 2

If you are contemplating a CBD lifestyle change, living on the water at Yarra's Edge, you will be surprised at the amazing aspects this expansive apartment has to offer.

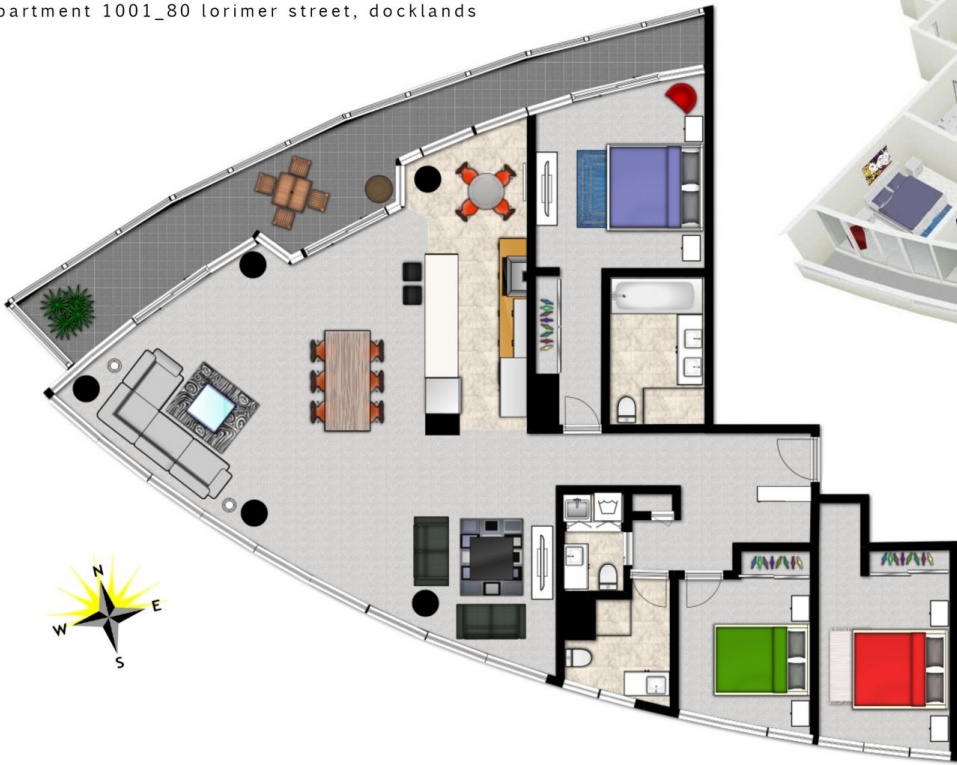
- Three generous bedrooms with built in robes, main with en-suite
- Open plan living, incorporating formal and informal dining and living
- Fabulous North facing balcony for entertaining
- Sun filled kitchen designed for a family, quality appliances and ample storage
- Euro laundry, zoned ducted heating and cooling
- 2 secure side by side car spaces plus storage
- Stroll to CBD, restaurants/cafes, shopping, Crown Casino and Etihad Stadium

**View** : <https://www.spaceea.com.au/sale/vic/inner-city/docklands/residential/apartment/5826784>

Contact: Helen Bell 0408 377 555

# SPACE<sup>7</sup>

apartment 1001\_80 lorimer street, docklands



space estate agents melbourne  
level 26>35 collins street melbourne >9673 1230

internal area approx: 177sqm  
external area approx: 29sqm  
total area approx: 206sqm