

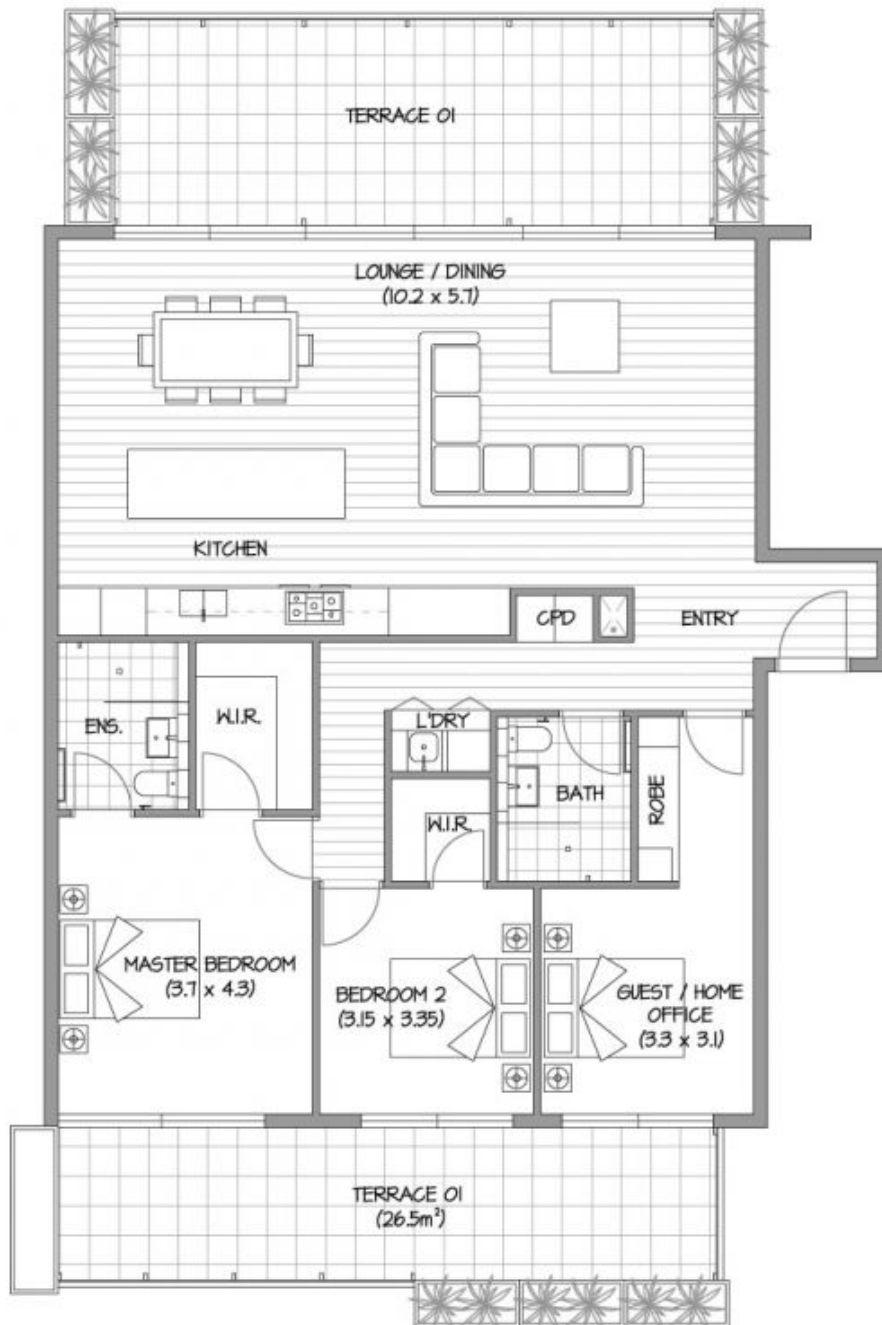
**202/160 Power Street Hawthorn VIC**

**3**  **2**  **2** 

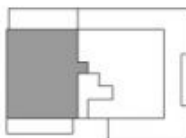
Cutting edge design, immaculately finished

- Beautifully proportioned master suite comprising ensuite and walk-in-robos
- Second bedroom complete with walk-in-robos
- Versatile home office / 3rd bedroom with built-in-robos
- Bedrooms boasts floor to ceiling glass doors opening onto a private terrace
- Light fills the vast open plan living & dining areas via expansive glass doors
- Seamless flow to spectacular terrace with extensive city views
- Visually stunning kitchen, island bench, feature marble & Miele appliances
- Luxurious central bathroom with floor to ceiling tiles
- Separate laundry, ample storage
- Two side by side car spaces. Two storage rooms on title

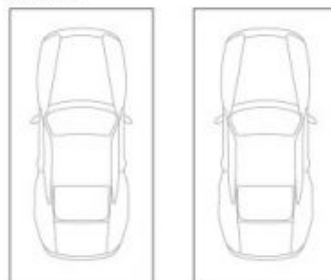
**View** : <https://www.spaceea.com.au/sale/vic/east/hawthorn/residential/apartment/5826782>



INTERNAL: 136m<sup>2</sup>  
 EXTERNAL: 58m<sup>2</sup>  
 TOTAL: 194m<sup>2</sup>



2 CAR SPACES  
 (Not in position)



2 PRIVATE STORAGE SPACES  
 (Not in position)

