

54/243 Collins Street Melbourne VIC

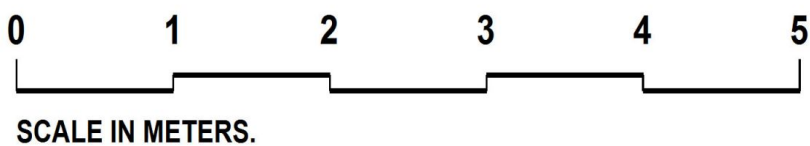
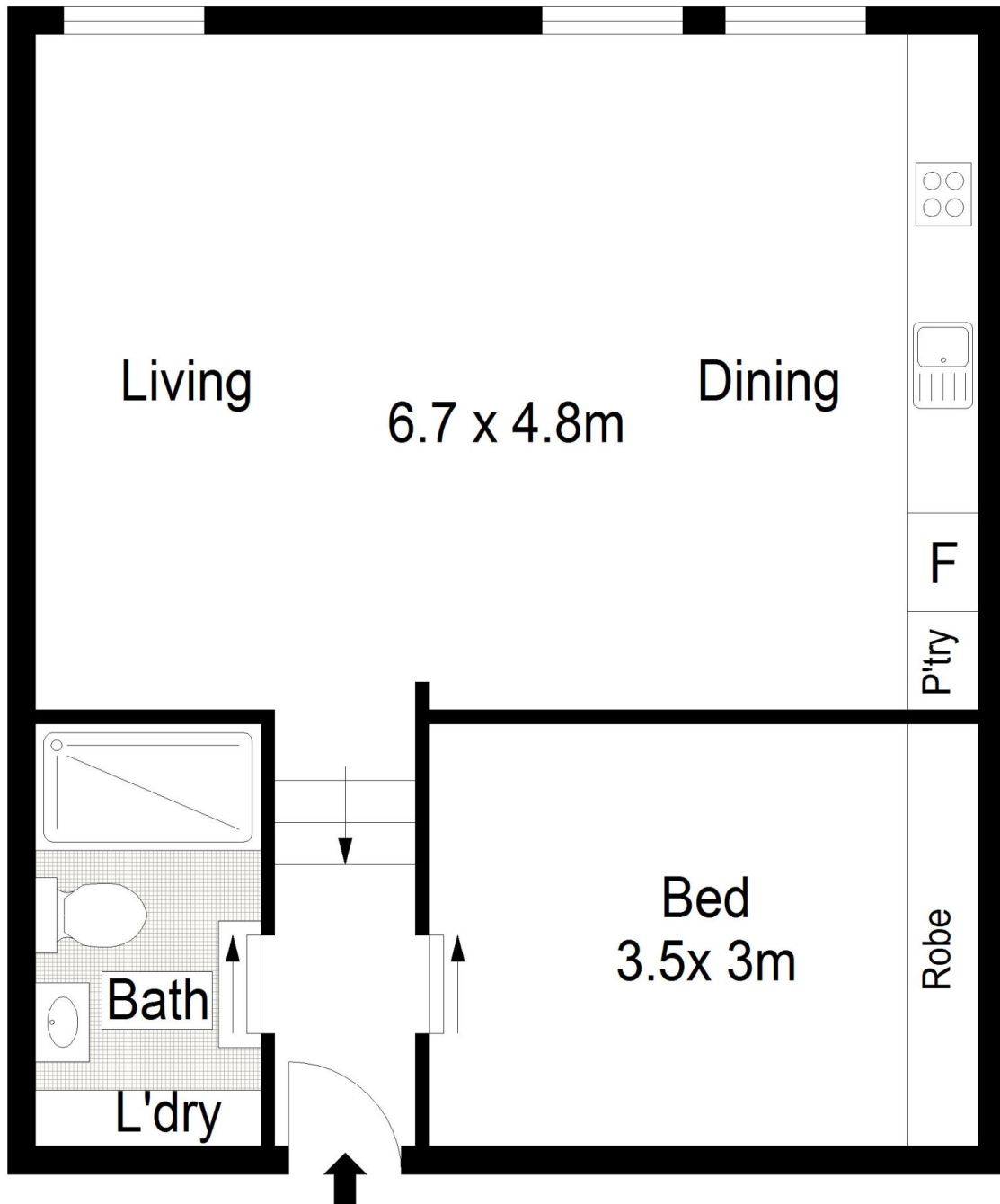
1 1

Boutique city living in Manchester Lane, boasting character and an array of original Art Noveau features

View : <https://www.spaceea.com.au/sale/vic/inner-city/melbourne/residential/apartment/5826644>

- immaculate master bedroom, plus integrated pull out 2nd bed
- open plan living and dining, natural light flowing throughout
- sleek kitchen modern appliances, integrated dish drawer and large pantry
- sparkling bathroom, concealed laundry
- loads of storage, security intercom, reverse cycle air-conditioning

Perfect as a low maintenance and secure city base residence, or a strong investment opportunity, offering easy access to a host of cultural, sporting and entertaining venues throughout Melbourne.



54/243, COLLINS STREET, MELBOURNE

FLOOR AREA = 52.9 sq.m